

MAYFAIR PRODUCT FEATURES

MAYFAIR - General Product Features

Aesthetics features:

- Sleek 5mm height ID, that looks elegant on the walls.
- Ergonomically designed Rocker for ease of Operation
- Wide Rocker for Switches
- Sleek peripheral ring - With North & South line



Plastic Material Features:

The products are made of superior quality engineering thermoplastics to meet all stringent safety requirements as per British standards and also ROHS complaint.

- Front Plates and Housings : Use of high quality flame-retardant, High HDT materials which do not emit any harmful toxic gases, performs excellently even at higher temperatures (Meets specific product standard requirements) & are chemically resistant (against chemicals commonly used for domestic purposes)
- Clip on plates : Materials used are UV-Stabilized to protect the product from discoloration & environmental stress cracking leading to the product looking pristine even after long duration of service.



Contact Material Features :

- High quality Copper and Brass used for Contacts
- Silver contacts (AgNi10) used in the Make/Break area to enhance the life of product
- Brass screws are used in all Box and Pillar terminals

Structurally Engineered Metal grids :

Structurally strong metal grids to retain switch and socket assemblies.

Safety:

Brass Earth terminals are provided in both 1G & 2G Metal grids for better safety.



MAYFAIR Range - 10A Switches

Standard reference : BS 60669 Part 1 1999 A2: 2008

CONTACTUM
Make The Switch

10A Products - General features:



1 Gang – 1W/2W



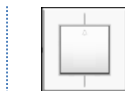
2 Gang – 1W/2W



3 Gang – 1W/2W

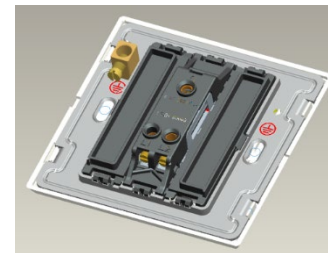
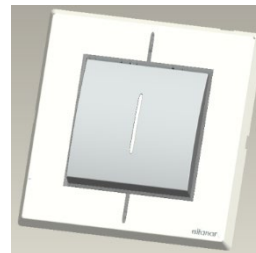


4 Gang – 1W/2W



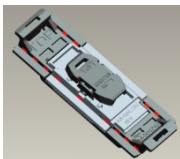
Bell push

- 10A Products designed to satisfy BS EN 60669 Part 1 1999 A2-2008.
- Suitable for 25 mm switch box (as per BS 4662).



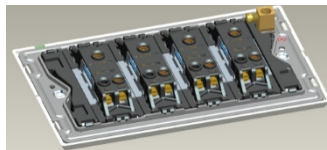
MODULARITY:

Common module assembly for
1Gang Size(7x7) and 2Gang size(7x14)



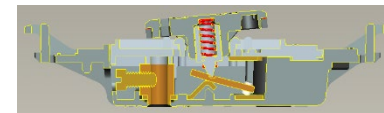
WIRING:

Inline terminals brings easiness for Wiring
especially in multi gangs



SELF WIPING MECHANISM:

Self wiping mechanism for cleaning the contact during switch
on/ off operation - To increase the self life of the contacts.
Also this mechanism itself acts as weld removal tool, when
contacts get welded



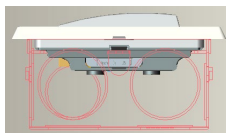
FITMENTS:

The Housing and Housing cover are assembled
by snap fit & also for metal grid fitment



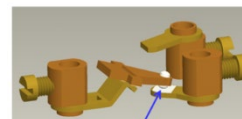
DESIGN:

Compact design, suits shallow Switch box
and provides more wiring space

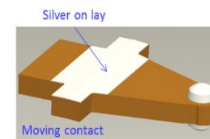


MAKE / BREAK AREA vs. CONTACT LIFE:

Silver onlay and Silver welded contacts are used in make /
break areas. This helps in lesser temperature rise & longer
contact life, thereby increasing product life.



Silver contacts @ make/break



Silver on lay

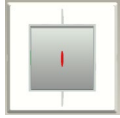
Moving contact

MAYFAIR Range - 20A Switches

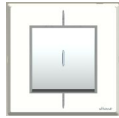
Standard reference : BS 60669 Part 1 1999 A2: 2008

CONTACTUM
Make The Switch

20A Products - General features:



1 Gang - DP



1 Gang - 2W/INT

- 20A Products designed to satisfy BS EN 60669 Part 1 1999 A2-2008.
- Suitable for 25 mm switch box (as per BS 4662).

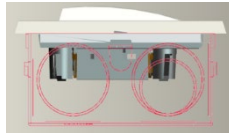
MODULARITY:

Modularity made for DP, 2Way and Intermediate products(7x7)



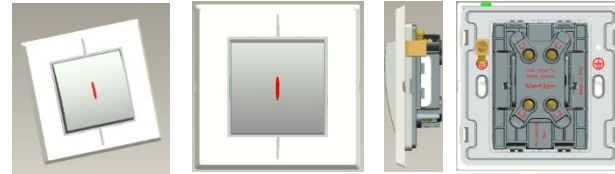
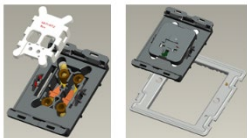
DESIGN:

Compact design, suits shallow Switch box and provides more wiring space



FITMENTS:

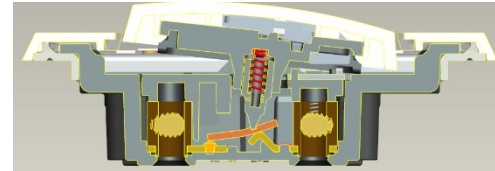
The Housing and Housing cover are assembled by snap fit & Module will be assembled with the grid plate



SELF WIPING MECHANISM:

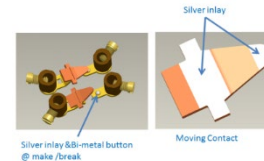
Self wiping mechanism for cleaning the contact during switch on/ off operation - To increase the self life of the contacts.

Also this mechanism itself acts as weld removal tool, when contacts get welded



MAKE / BREAK AREA vs. CONTACT LIFE:

Silver inlay and Bimetallic buttons are used in make / break areas. This helps in lesser temperature rise & longer contact life, thereby increasing product life.



MAYFAIR - 45A Switches

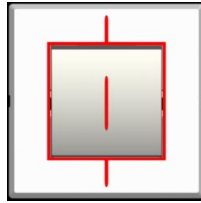
Standard reference : BS 60669 Part 1 1999 A2: 2008

CONTACTUM
Make The Switch

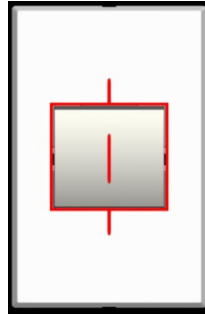
45A Products - General features:



Common Module



7x7



7x14

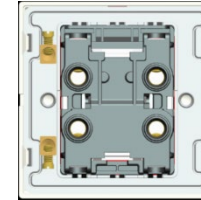
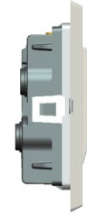
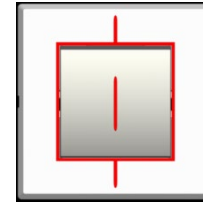
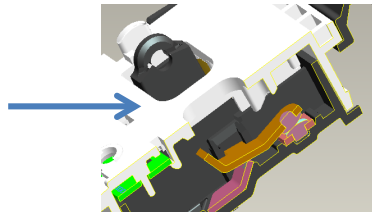
- 45A Products designed to satisfy BS EN 60669 Part 1 1999 A2-2008
- 45A Switch Available in 7X7 & 7X14 Size
- Common module assembly for 7X7 & 7X14 Size
- Suitable for 35 mm switch box (as per BS 4662).

SAFETY:

- LED Light Indicator neatly blends with the rocker to Indicate Switch-On Condition.
- Arcing during make / break (Visibility) completely shielded from the user

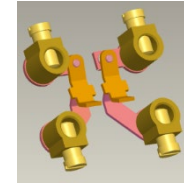


Housing cover shield
the arc visibility



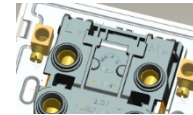
CONTACT LAYOUT:

- Silver in-Lay, Bi-metallic buttons used in make break areas, thereby increasing product life.
- Terminals designed for installation of 16 Sq.mm Cables



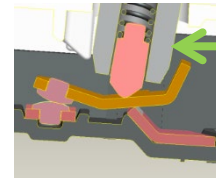
EARTHING:

- Two Earth Terminals Provided for Easy Earth Looping



WELD REMOVAL:

- Weld Removal Mechanism Present in the Rocker to Break Contact Welds



Weld Removal feature
on Rocker

MAYFAIR Range - 13A Switched Sockets

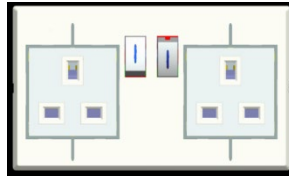
Standard reference : BS 1363-2:1995

CONTACTUM
Make The Switch

13A Products - General features:



1 Gang



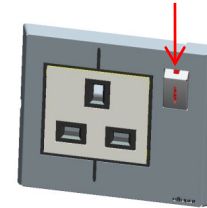
2 Gang



- 13A Products designed to satisfy BS 1363-2:1995.
- Shutter made of self lubricating plastic material, for smoother Plug insertion
- Suitable for 25 mm switch box (as per BS 4662).

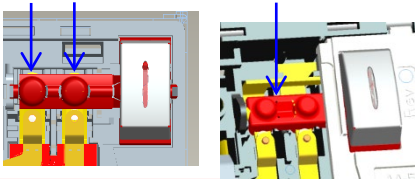
VISUAL INDICATION:

Red identification on Rocker while the switch is in 'ON', for easy identification



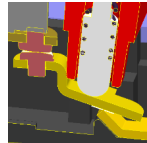
SAFETY:

No Arc visibility through the rocker
- Make & Break is away from Rocker



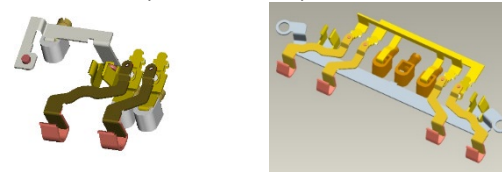
WELD REMOVAL:

- Weld Removal Mechanism present in the Rocker to Break Contact Welds



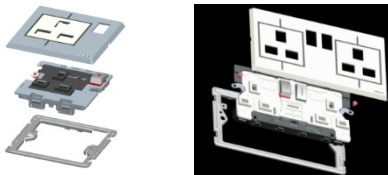
CONTACT LAYOUT :

Simplified contact layout and overall Conductor length is less which helps in lesser temperature rise



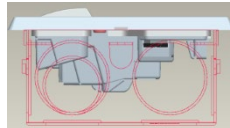
FITMENTS:

Snap Lock between the Module and Metal Grid



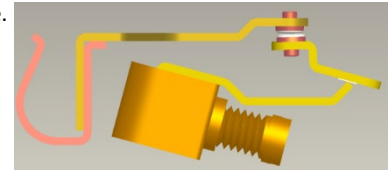
DESIGN:

Compact design, suits shallow Switch box and provides more wiring space



MAKE / BREAK AREA

Silver (AgNi10) contacts are used in make / break areas.
This helps in lesser temperature rise & longer contact life, thereby increasing product life.



MAYFAIR Range - 15A Switched Socket (Tested for 32A)

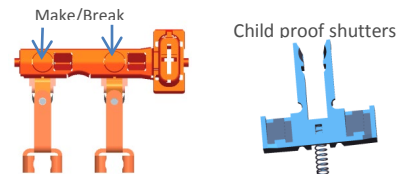
15A Switched Socket (Tested for 32A)



- Product developed for 32A rated Current, Considering BS 546:1950
- Designed and tested for withstanding 32A INDUCTIVE load
- Shutter made of self lubricating plastic material, for smoother Plug insertion
- Double pole switched socket ensures the appliance is safe in OFF condition
- Prolonged usage of the Air Conditioner will not affect the Socket outlets as the Live / Neutral lines are capable of withstanding up to 32A of current.
- Suitable for 35 mm switch box (as per BS 4662).

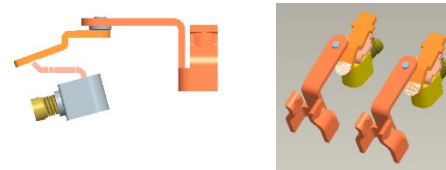
SAFETY:

- Make/break area away from Rocker, ensures safer switching
- Child proof shutters enhances safety



ELECTRICAL LAYOUT:

- Simplified contact layout Conductor length is less.
 - Silver (AgNi10) contacts are used in make / break areas.
- This helps in lesser temperature rise & longer contact life, thereby increasing product life.



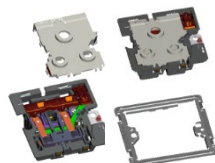
MODULARITY:

- Common module assembly

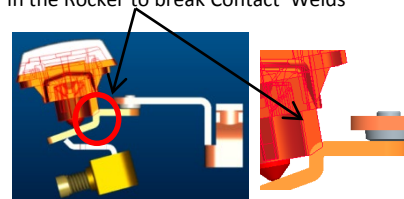


FITMENTS:

- Snaps fittings are used instead of Screws

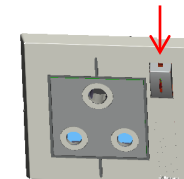


- Weld removal Mechanism present in the Rocker to break Contact Welds



VISUAL INDICATION:

Red identification on Rocker while the switch is in 'ON'

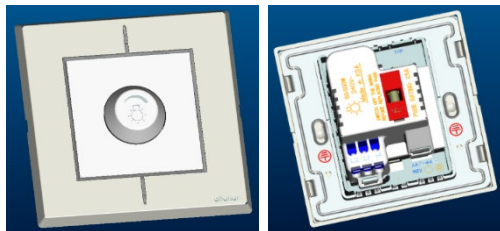


MAYFAIR Range – Light Dimmers

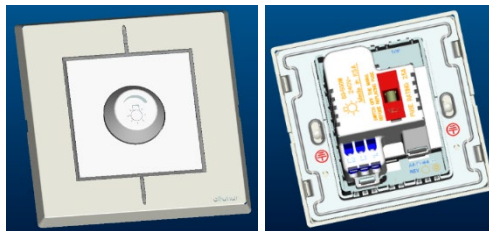
Standard reference : **BS EN 60669-2-1**

CONTACTUM
Make The Switch

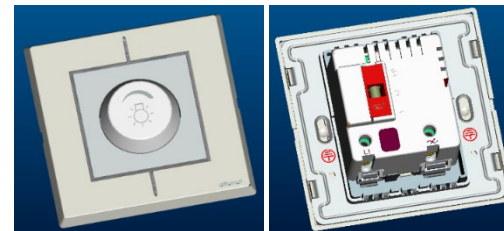
400W Light Dimmer:



500W Light Dimmer:



1000W Light Dimmer:



Light Dimmers - General features:

- Product designed to satisfy BS EN 60669-2-1
- Product is fused for safety
- Suitable for 35 mm switch box (as per BS 4662).

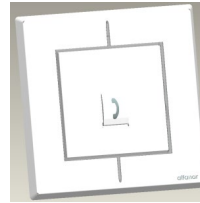
MAYFAIR Range - Communication Sockets

Standard reference : **BS 5733:2010**

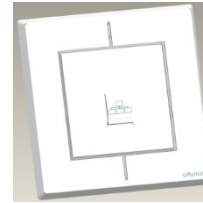
CONTACTUM
Make The Switch

Telephone & Data Socket - General features:

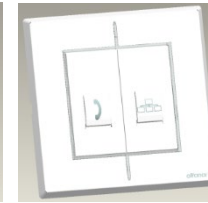
- Products designed to satisfy BS 5733-2010
- Sockets are Designed with Spring Operated Shutter for Easy Identification
- Telephone and Data Sockets Marked with Symbol for Easy Identification
- American Telephone Jack Available With 6P4C RJ11
- Data Socket Jack Available in CAT6
- Combination of Telephone Jack and Data Jack Available in 7X7 Size
- Combination of Telephone Jack and Satellite socket Available in 7X7 Size
- Suitable for 35mm Switch Box (as per BS 4662)



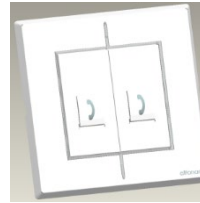
BB119



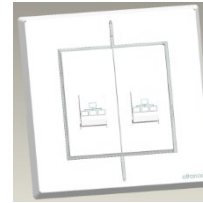
BB137



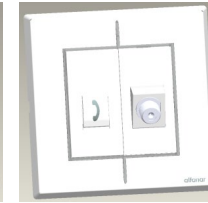
BB21937



BB219



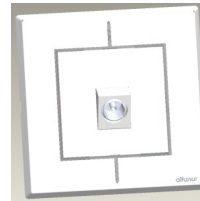
BB237



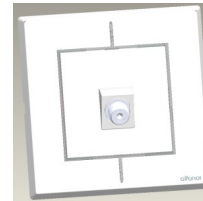
BB21910

TV & Satellite Socket - General features:

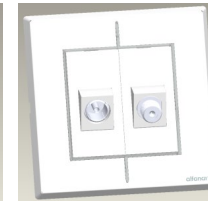
- Products designed to satisfy BS 5733:2010
- Angularly Tilted TV and Satellite Socket for Easy cable management
- Combination of TV and Satellite Available in 7X7 Size
- Suitable for 35 mm switch box (as per BS 4662)



BB109



BB110



BB20910

THANK YOU