

# CONTACTUM



## Profile+

A modern, design-led collection of white moulded wiring accessories developed to combine architectural appeal with practical functionality.

# CONTACTUM

Established in 1936, Contactum is a proud British brand with a distinguished heritage in the electrical industry. For nearly a century, we have been a trusted name in the supply of wiring accessories, circuit protection devices, and control products across residential, commercial, and industrial sectors.

Our reputation has been built on a foundation of quality, safety, and a design-led approach, with a focus on delivering products that meet the unique demands of the UK market.

Offering the latest solution-led wiring accessories to award-winning consumer units and commercial switchgear, Contactum delivers reliable, specification-grade electrical solutions designed to meet the evolving needs of electricians, contractors, wholesalers, and specifiers.

We pride ourselves on combining performance, compliance, and visual appeal across our ranges, supported by robust technical expertise and responsive customer service.



To support our commitment to excellence, Contactum operates an ISO Integrated Management System, covering quality (ISO 9001), environmental (ISO 14001), and occupational health & safety (ISO 45001) standards. This ensures that every aspect of our operations — from product development to customer service — is underpinned by internationally recognised best practices.

This achievement highlights our continuous efforts to operate transparently, reduce environmental impact, and promote responsible business practices throughout our supply chain.

Further reinforcing our dedication to sustainability and corporate responsibility, Contactum has recently been awarded a medal-level rating by Eco Vadis, a leading global assessment platform for environmental, social, and ethical performance.

ecovadis



## alfanar

As part of the alfanar group, Contactum benefits from the backing of a global leader in electrical manufacturing, energy, and infrastructure. Headquartered in Riyadh, Saudi Arabia, alfanar brings world-class scale, engineering excellence, and advanced production capabilities to the partnership.

A large proportion of Contactum’s product offering is manufactured at alfanar Industrial City — a cutting-edge 700,000 square metre facility in Riyadh. This ISO-certified complex is equipped with automated production lines, quality testing laboratories, and R&D centres, staffed by skilled professionals committed to delivering consistent quality and innovation across all markets.



By combining the local insight and agility of a UK-based brand with the scale, resources, and innovation of a global manufacturing group, Contactum remains uniquely positioned to serve the needs of the modern electrical market. Whether supporting new build developments, refurbishment projects, or infrastructure upgrades, Contactum continues to deliver dependable solutions trusted by professionals across the UK and beyond.

## Contents

Overview & Features	4
Product Highlights & Technical Features	5
10AX Switches	6
10AX Key Switches	6
Dimmer Switches	6
13A Socket Outlets	7
13A USB Socket Outlets	7
5A Socket Outlets	7
RCD Socket Outlets	7
Shaver Sockets	7
13A Connection Units	7
RCD 13A Connection Units	7
20A Switches	8
Flex Outlets	8
45A Switches	8
45A Cooker Control Units	8
45A Switches - White Rocker	8
45A Cooker Control Units - White Rocker	8
Flex Outlets	8
Telephone, Data & Satellite Outlets	9
Blank Plates	9
Surface Boxes	9
Profile+ Aperture	10
Profile+ Grid	12
Euromod plates & Multimedia Lounge Plates	14
Co-axial & Satellite Sockets Euro Modules	14
Telephone Outlets Euro Modules	14
Phono/Speaker Euro Modules	15
HMDI Euro Modules	15
USB Modules	15
Euro Socket Module	15
Brush Euro Modules	15
Blank Plates Euro Modules	15

# Profile+

Defined by Simplicity.

The Profile+ range has been developed to meet the needs of today's dynamic projects.

Combining a clean aesthetic with broad adaptability, Profile+ is designed to serve residential, commercial, and architectural environments.

By focusing on style, versatility, and installer practicality, Profile+ creates a platform for reliable performance in every application.



## Versatile Applications

Fits seamlessly into residential, commercial, and project builds



## Comprehensive Range

Wide portfolio covering sockets, switches, media, and specialist outlets



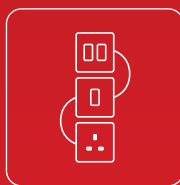
## Future-Ready

Options for USB, smart integration, and adaptable grid solutions



## Sustainable Choice

Supporting environmentally responsible product development



## Streamlined Aesthetic

Unified look across all devices for consistent interiors



## Part of a Complete System

Profile+ is more than a product, it's a full system designed to give installers and specifiers the freedom to build tailored solutions with consistent performance and finish.



# Overview & Features



### Minimalist Design

Smooth white urea formaldehyde finish with modern styling to suit contemporary interiors.



### Modular Plate System

Enables tailored configurations using a wide range of interchangeable aperture modules.



### Antimicrobial Properties

The surface naturally resists bacterial growth, enhancing hygiene in homes, medical environments and shared spaces.



### Durable Construction

High-strength urea offers impact resistance and long-lasting performance.

## Technical Features

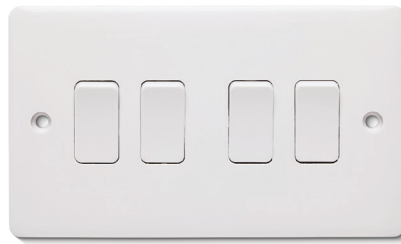
- + Fully type tested by independent third-party labs
- + Manufactured from urea formaldehyde with anti-bacterial and flame-retardant properties
- + Secure screw terminals ensure strong, low-resistance connections
- + Double pole switching on all sockets
- + Featuring Intelligent programmable LED-rated dimmers for future proof lighting controls
- + Available in complete grid and modular formats
- + Fully recyclable packaging
- + Type-tested to BS standards
- + Long-life performance materials

## Designed for Modern Living

Profile+ delivers more than a white moulded accessory range — it introduces a flexible, design-conscious system that responds to modern installation demands.

With its combination of aesthetics, adaptability, and safety, Profile+ empowers specifiers, electricians, and end users to achieve consistency and performance across any project.

## 10AX Switches



### 10AX Switch

Description:	Product Code:
1G 2W	PRF2712
2G 2W	PRF2722
3G 2W	PRF2732
4G 2W	PRF2742
6G 2W	PRF2762



### 10AX Intermediate switch

Description:	Product Code:
1G	PRF2710



### 10AX Retractive switch

Description:	Product Code:
1G 2W	PRF2719



## 10AX Key Switches



### 10AX Key switch

Description:	Product Code:
1W DP	PRF2714/KS
1W DP + Emg light	PRF2714/KSEL



### 10AX 3 Pole fan isolator

Description:	Product Code:
3 Pole fan isolator	PRF2713

## Dimmer Switches



### Dimmer

Description:	Product Code:
1G 400W 2W	PRF2612/400S
2G 400W 2W	PRF2622/400S
3G 400W 2W	PRF2632/400S
4G 400W 2W	PRF2642/400S

### Intelligent LED dimmer

Description:	Product Code:
1G 150W 2W	PRF2612/150L
2G 150W 2W	PRF2622/150L
3G 150W 2W	PRF2632/150L
4G 150W 2W	PRF2642/150L

### Unfurnished dimmer plate and knob

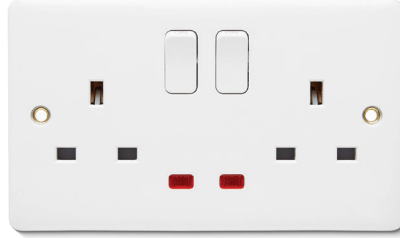
Description:	Product Code:
1G	PRF2610
2G	PRF2620
3G	PRF2630
4G	PRF2640

## 13A Socket Outlets



13A Socket unswitched

Description:	Product Code:
1G	PRF2345
2G	PRF2355



13A Socket switched

Description:	Product Code:
1G DP	PRF2346
2G DP	PRF2356
1G DP + neon	PRF2347
2G DP + neon	PRF2357

## 13A USB Socket Outlets



13A Socket switched  
USB A+C

Description:	Product Code:
1G 5V/2.1A	PRF5346
2G 5V/3.1A	PRF5356
1G 5V/3.1A	PRF7346
2G 5V/4.8A	PRF7356



13A Socket switched DP  
USB C+C

Description:	Product Code:
2G 33W	PRF8356/33

## 5A Socket Outlets



5A Socket unswitched

Description:	Product Code:
1G	PRF2325

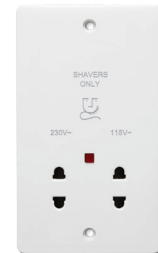
## RCD Socket Outlets



13A Socket switched DP RCD

Description:	Product Code:
2G 30mA pass	PRF4900

## Shaver Sockets



Shaver socket

Description:	Product Code:
230/115V	PRF2300

## 13A Connection Units



13A FCU Unswitched

Description:	Product Code:
13A FCU Unswitched	PRF2364
13A FCU Unswitched + flex	PRF2365
13A FCU Unswitched + neon	PRF2362
13A FCU Unswitched + flex neon	PRF2363



13A FCU Switched

Description:	Product Code:
13A FCU Switched DP	PRF2366
13A FCU Switched DP + flex	PRF2368
13A FCU Switched DP + neon	PRF2367
13A FCU Switched DP + flex neon	PRF2369

## RCD 13A Connection Units



13A FCU Unswitched RCD

Description:	Product Code:
30mA Passive	PRF4904

20A Switches



20A Switch



Description:	Product Code:
1G 20A Switch DP	PRF2796
1G 20A Switch DP + flex	PRF2798
1G 20A Switch DP + neon	PRF2797
1G 20A Switch DP + flex neon	PRF2799

Flex Outlets



20A Flex outlet

Description:	Product Code:
20A Flex outlet	PRF2137

45A Switches



45A Switch

Description:	Product Code:
1G DP	PRF2756
1G DP + neon	PRF2757
1G Vertical plate DP	PRF2746
1G Vertical plate DP + neon	PRF2747

45A Cooker Control Units



45A Cooker control unit

Description:	Product Code:
45A Cooker control unit	PRF2456
45A Cooker control unit + neon	PRF2457

45A Switches - White Rocker



45A Switch - White Rocker

Description:	Product Code:
1G DP	PRF2756/WR
1G DP + neon	PRF2757/WR
1G Vertical plate DP	PRF2746/WR
1G Vertical plate DP + neon	PRF2747/WR

45A Cooker Control Units - White Rocker



45A Cooker control unit - White Rocker

Description:	Product Code:
45A Cooker control unit	PRF2456/WR
45A Cooker control unit + neon	PRF2457/WR

Flex Outlets



45A Cooker flex outlet

Description:	Product Code:
1G	PRF2177





## Telephone & Satellite Outlets



Coaxial socket

Description:	Product Code:
1G Non-iso	PRF2147
2G Non-iso	PRF2148



Satellite socket

Description:	Product Code:
1G	PRF2151



Coaxial & satellite socket

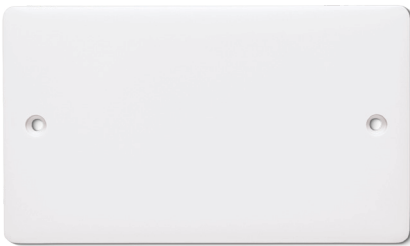
Description:	Product Code:
2G	PRF2150



Telephone socket

Description:	Product Code:
Master	PRF2169
Secondary	PRF2170

## Blank Plates



Blank plate

Description:	Product Code:
1G	PRF2017
2G	PRF2027

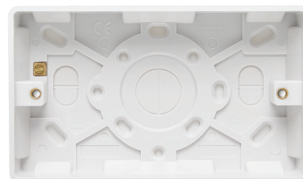


## Surface Boxes



1G Pattress box with earth terminal

Description:	Product Code:
1G 16mm	PRF1116E
1G 25mm	PRF1125E
1G 35mm	PRF1135E
1G 47mm	PRF1147E



2G Pattress box with earth terminal

Description:	Product Code:
2G 25mm	PRF1225E
2G 35mm	PRF1235E
2G 47mm	PRF1247E
2G 25mm Dual	PRF1225DE



# Aperture Module System

Where Aesthetics Meet Functionality.

The Profile+ Aperture System is an innovative solution for modern wiring needs, combining simplicity, safety, and scalability. Designed with installers, designers, and end-users in mind, this modular system makes it easier than ever to customise electrical layouts, reduce installation time, and deliver a sleek, professional finish.

From residential projects to large-scale commercial developments, the Profile+ Aperture System ensures perfect integration, high performance, and future-ready connectivity.



Modular Design  
for Ultimate  
Customisation



Quick & Easy  
Installation



Sleek, Modern  
Aesthetics



Safe & Reliable  
Performance



Durable  
Construction



Scalable for  
Future Needs



Profile+ Aperture modules are available in a broad selection of lighting and power switching options, enabling bespoke configurations on standard plate switches.

## Why Choose Aperture?

### Efficiency

Faster, cleaner installations with fewer parts and less waste.

### Flexibility

Create tailored solutions for every customer and space.

### Durability

Built from high quality white urea for long-lasting performance.

### Compliance

Fully certified to meet current UK and international electrical safety standards.

## Profile+ Aperture

### Aperture plate



Description:	Product Code:
1G	PRFM201
2G	PRFM202
3G	PRFM203
4G	PRFM204
6G	PRFM206



### 10AX Aperture switch module

Description:	Product Code:
10AX 2W	PRFM2712

### 10AX Intermediate aperture switch module

Description:	Product Code:
10AX Intermediate	PRFM2710

### 10A Retractive aperture switch module

Description:	Product Code:
10A 2W Retractive	PRFM2719



### Aperture blank module

Description:	Product Code:
Aperture blank module	PRFM2017



### 10AX Aperture key switch

Description:	Product Code:
1W DP	PRFM2714/KS
1W DP + Emg light	PRFM2714/KSEL
2W SP	PRFM2712/KS

### 10AX Aperture switch DP



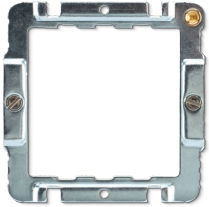
Description:	Product Code:
1W	PRFM2714
1W + Boiler	PRFM2714-BL
1W + Cooker hood	PRFM2714-CH
1W + Dish washer	PRFM2714-DW
1W + Fridge	PRFM2714-FD
1W + Fridge freezer	PRFM2714-FF
1W + Fan	PRFM2714-FN
1W + Freezer	PRFM2714-FZ
1W + Hob	PRFM2714-HB
1W + Hob ignitor	PRFM2714-HI
1W + Heater	PRFM2714-HE
1W + Hot tap	PRFM2714-HT
1W + Light	PRFM2714-LT
1W + Microwave	PRFM2714-MW
1W + Oven	PRFM2714-OV
1W + Tumble dryer	PRFM2714-TD
1W + Wine cooler	PRFM2714-WC
1W + Waste disposal	PRFM2714-WD
1W + Water heater	PRFM2714-WH
1W + Washing machine	PRFM2714-WM
1W + Warming drawer	PRFM2714-WR

## Profile+ Grid

### Grid plate



Description:	Product Code:
1G	PRFG201
2G	PRFG202
3G	PRFG203
4G	PRFG204
6G	PRFG206
8G	PRFG208
12G	PRFG212



### Grid frame plastic plates

Description:	Product Code:
1G & 2G	PRFGFP12
3G & 4G	PRFGFP34



### 20AX Grid switch SP

Description:	Product Code:
2W	PRFG2812



### 20AX Intermediate grid switch

Description:	Product Code:
20AX Intermediate	PRFG2810



### 20A Retractive grid switch

Description:	Product Code:
20A 2W	PRFG2820
20A 2W + Bell	PRFG2820-BE
20A 2W + Press	PRFG2820-PR



### 20A Retractive ctr. off grid switch

Description:	Product Code:
20A 2W	PRFG2819



### 10A 3 Pole grid fan isolator

Description:	Product Code:
10A	PRFG2713



### 150W Intelligent LED dimmer

Description:	Product Code:
2W	PRFG2612/150L



### 13A Grid FCU

Description:	Product Code:
13A Grid FCU	PRFG2364



### 20AX Grid key switch

Description:	Product Code:
20AX 1W DP	PRFG2814/KS
20AX 1W DP + Emg light	PRFG2814/KSEL
20AX 2W SP	PRFG2812/KS
20AX 2W SP + Emg light	PRFG2812/KSEL



### Grid USB charger A+C 22W

Description:	Product Code:
Grid USB charger A+C 22W	PRFG8342/22



## Profile+ Grid

### 20AX Grid switch DP

Description:	Product Code:
1W	PRFG2814
1W + LED indicator	PRFG2815
1W + Boiler	PRFG2814-BL
1W + Cooker hood	PRFG2814-CH
1W + Dish washer	PRFG2814-DW
1W + Fridge	PRFG2814-FD
1W + Fridge freezer	PRFG2814-FF
1W + Fan	PRFG2814-FN
1W + Freezer	PRFG2814-FZ
1W + Hob	PRFG2814-HB
1W + Hob ignitor	PRFG2814-HI
1W + Heater	PRFG2814-HE
1W + Hot tap	PRFG2814-HT
1W + Light	PRFG2814-LT
1W + Microwave	PRFG2814-MW
1W + Oven	PRFG2814-OV
1W + Tumble dryer	PRFG2814-TD
1W + Wine cooler	PRFG2814-WC
1W + Waste disposal	PRFG2814-WD
1W + Water heater	PRFG2814-WH
1W + Washing machine	PRFG2814-WM
1W + Warming drawer	PRFG2814-WR



#### Grid flex outlet

Description:	Product Code:
Grid flex outlet	PRFG2137

#### Grid indicator

Description:	Product Code:
Amber	PRFG1/AMB
Green	PRFG1/GRN
Red	PRFG1/RED

#### Grid blank

Description:	Product Code:
Grid blank	PRFG2017



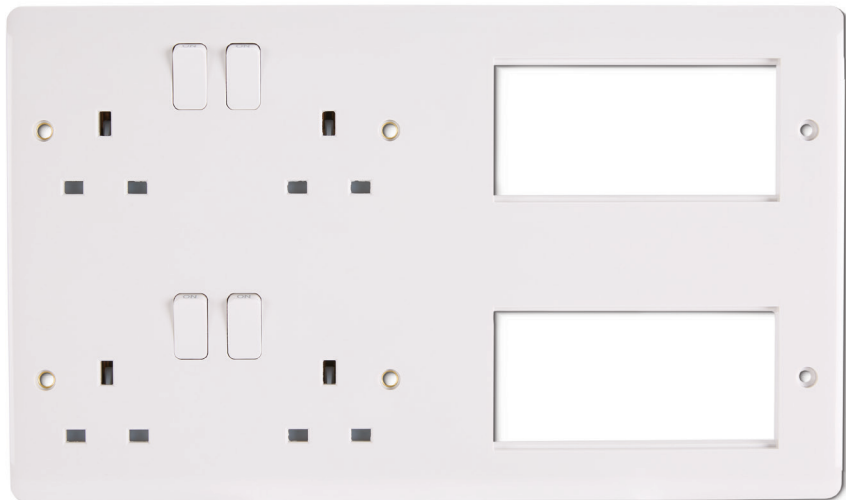
Profile+

## Euromod plates & Multimedia Lounge Plate



### Euromod plate

Description:	Product Code:
1G 1 Mod	PRF2107
1G 2 Mod	PRF2117
2G 4 Mod	PRF2127



### Multimedia lounge plate

Description:	Product Code:
4G 13A Socket + 8G Euromod	PRF212

## Co-axial & Satellite Sockets Euro Modules



### Euro module - White

Description:	Product Code:
TV Male outlet (25x50)	E1146W
TV Female outlet (25x50)	E1147W
F Connector (25x50)	E1151W
TV/sat (50x50)	E1153W
TV/radio (50x50)	E1158W
TV/radio/sat (50x50)	E1160W
TV/radio/sat/sat (50x50)	E1161W

## Telephone Outlets Euro Modules



### BT Tel outlet - White

Description:	Product Code:
Master (25x50)	E1169W
Slave (25x50)	E1170W

### Western electric tel RJ11 - White

Description:	Product Code:
RJ11 (25x50)	E1117W

### Data outlet RJ45 - White

Description:	Product Code:
CAT5e (25x50)	E1180W
CAT6 (25x50)	E1181W
CAT6A (25x50)	E1182W

## USB Modules



USB A+A Port charger module - White

Description:  
USB A+A (50x50)

Product Code:  
E6342W



USB A+C Port charger module - White

Description:  
USB A+C (25x50)

Product Code:  
E7341W

### Euro Socket Module

HDMI Euro module - White

Description:  
Euro socket (50x50)

Product Code:  
E1345W

### Phono/Speaker Euro Modules

Euro audio module - White

Description:  
Speaker (25x50)  
Phone (25x50)

Product Code:  
E1142W  
E1143W

### Blank Plates Euro Modules

Blank Euro module - White

Description:  
Blank (25x50)

Product Code:  
E1187W

### Brush Euro Modules

Brush Euro module - White

Description:  
100mm  
50mm  
25mm

Product Code:  
E1194W  
E1092W  
E1091W

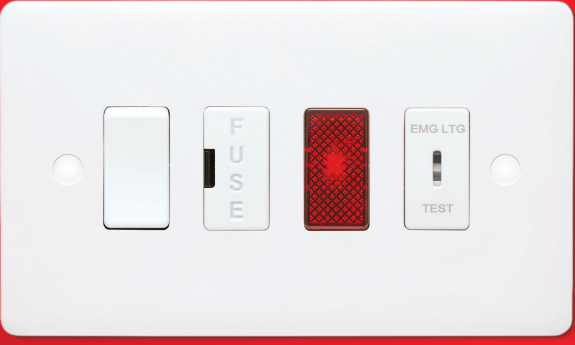
### HDMI Euro Modules

HDMI Euro module - White

Description:  
HDMI outlet (25x50)

Product Code:  
E1195W

# Profile+



**CONTACTUM**

Quality by Design

# Profile+

**CONTACTUM**

[www.contactum.co.uk](http://www.contactum.co.uk)

020 8208 7419

[sales@contactum.co.uk](mailto:sales@contactum.co.uk)



@Contactumltd



Contactum Ltd



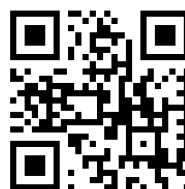
@Contactumltd



Contactum Ltd



@Contactumltd



Scan me for more  
info on our website



PRFB - RevLev01



5 056009 564581 >