

General Instructions

These instructions are intended for use by qualified electricians. This unit must be installed in accordance with the current edition of the IET Regulations for Electrical Installations (BS7671 Requirements for Electrical Installations).

Always replace the cover and door assembly before turning power on. Test in accordance with current IET wiring regulations. Contactum blanks must be fitted in all unused apertures.

All components used in Contactum DDB board must be supplied or approved by Contactum. The use of any other components whether complying with the relevant standard or not, will void Contactum guarantee.

T2S4031KIT - T2 40kA Compact Surge Arrestor Kit

Product Specifications

Imax 8/20 μ s	40kA
In 8/20 μ s	20kA
Up	1.5kV
Uc	L-N 275V; N-PE 255V
Iscrr	25kA
Response time	\leq 25ns
Type	2
Uo	230V
Frequency	50/60Hz
OCPD1	100A Max
Protection degree	IP20
Earthing system	TT/TN
Temperature rating	-5 to 40°C
Tightening torque	L1, L2, L3, N: 1.2 Nm PE: 2 Nm
Terminal capacity	L1, L2, L3, N: 2.5-16mm PE: 4-25mm
MCB	63A 10kA Type C TP
Standard	BS EN 61643-11
Compatible products*	DDB125FIS03-23 DDB12504-24 DDB250MSR06-24

Kit Content

Contactum SPD kits are supplied complete with interconnecting cables which are intended to be cut to the appropriate lengths dependant on board configuration. Spare ferrules and lugs are also included to facilitate correct installation. On no account must any of these cables be lengthened.

1 x T2S4031 Compact SPD
1 x 3 pole MCB (63A) Type C (CPB1063C3)
1 x L1 live conductor
1 x L2 live conductor
1 x L3 live conductor
1 x neutral conductor
1 x earth conductor
5 x 6mm square ferrule
1 x lug

*Contactum SPD kits are only compatible with isolator and time-delayed RCD incomers.

Installation Instructions for DDB12FIS03-23 / DDB12504-24 125A B Board

COMING SOON

1. Mount the surge arrester (SPD) as shown in figure 1.
2. Mount the 3 pole MCB (63A) Type C (CPB1063C3) on the lower right hand side of the busbar assembly of the DDB Board. See figure 1.
3. Connect the Surge Arrester cable set between the SPD and the 3P MCB as follows:
 - a. Connect the brown cable between (L1) terminal on the left hand side of the SPD and the outgoing terminal of the 3P MCB connected to the brown phase.
 - b. Connect the black cable between the middle (L2) terminal of the SPD and the middle outgoing terminal of the 3P MCB connected to the black phase.
 - c. Connect the grey cable between the (L3) terminal on the right hand side of the SPD and the outgoing terminal of the 3P MCB connected to the grey phase.
 - d. Connect the blue (Neutral) cable between the (N) terminal on the SPD and the lowest terminal of the right neutral terminal bar.
 - e. Connect the earth cable between the earth terminal (⊕) or (PE) on the SPD and the lowest earth terminal (B) on the right earth terminal bar.

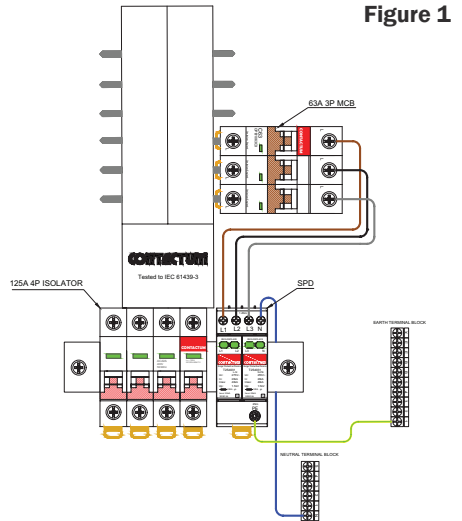


Figure 1

Installation Instructions for DDB250MSR06-24 250A B Board

1. Mount the surge arrester (SPD) as shown in figure 2.
2. Mount the 3 pole MCB (63A) Type C (CPB1063C3) on the lower right hand side of the busbar assembly of the DDB Board. See figure 2.
3. Connect the Surge Arrester cable set between the SPD and the 3P MCB as follows:
 - a. Connect the brown cable between (L) terminal on the left hand side of the SPD and the outgoing terminal of the 3P MCB connected to the brown phase.
 - b. Connect the black cable between the second from the left (L) terminal of the SPD and the middle outgoing terminal of the 3P MCB connected to the black phase.
 - c. Connect the grey cable between the second from the right (L) terminal on the SPD and the outgoing terminal of the 3P MCB connected to the grey phase.
 - d. Connect the blue (Neutral) cable between the (N) terminal on the SPD and the lowest terminal of the right neutral terminal bar.
 - e. Connect the earth cable between the earth terminal (⊕) or (PE) on the SPD and the earth stud to the lower right-hand side of the enclosure.

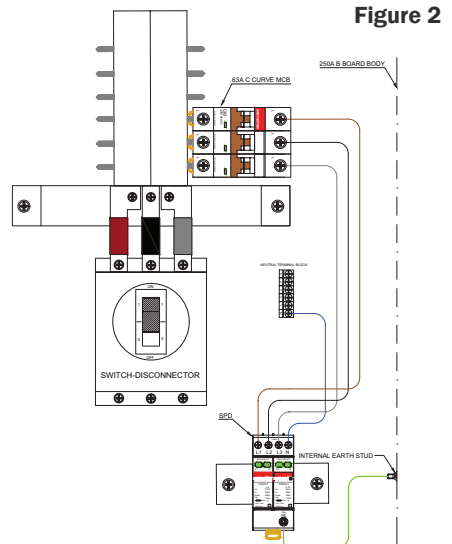


Figure 2