

# CONTACTUM



Dustproof



Waterproof

## IP66 Weatherproof

The industry recognised Weatherproof range has been specifically designed for use outdoors and installations where there is the likelihood of high exposure to either dust or water, there is no compromise on safety with the IP66 rating.

Secure solutions are possible with the use of a padlock.

Founded in 1936 we have always based our values on Quality & Safety underpinned with the knowledge that **design is everything.**

With the technical expertise of **alfanar**, our parent company, we have continued this tradition with the development of IP66 Weatherproof and added some new benchmarks of exceptional aesthetics to seamlessly blend in to modern living environments coupled with outstanding features and benefits to aid designers, installers and specifiers.



Contactum is a subsidiary company to alfanar.

alfanar is a global company headquartered in Riyadh (KSA), primarily engaged in the manufacturing and trading of a wide variety of low, medium, and high voltage electrical products, in addition to its portfolio of conventional and renewable energy solutions, oil and gas, water treatment, infrastructure, technical services, digital solutions, and electronics engineering.

The hub of alfanar’s manufacturing operations is Medinet alfanar Alsinaiya (alfanar Industrial City), a 700,000 square-meter complex located in Riyadh.

The complex houses an array of ultra-modern manufacturing facilities and laboratories equipped with state-of-the-art technologies and staffed with highly skilled professionals. In addition, alfanar has a network of manufacturing and distribution facilities around the world that includes: Contactum (UK), Kopp (Germany, Tunisia) and ZIV (Spain, India, Ireland/UK, Brazil), EA (Italy), SFA Electric (Turkey), alfanar Electrical Systems (UAE) and alfanar Engineering Services (India).



# CONTACTUM

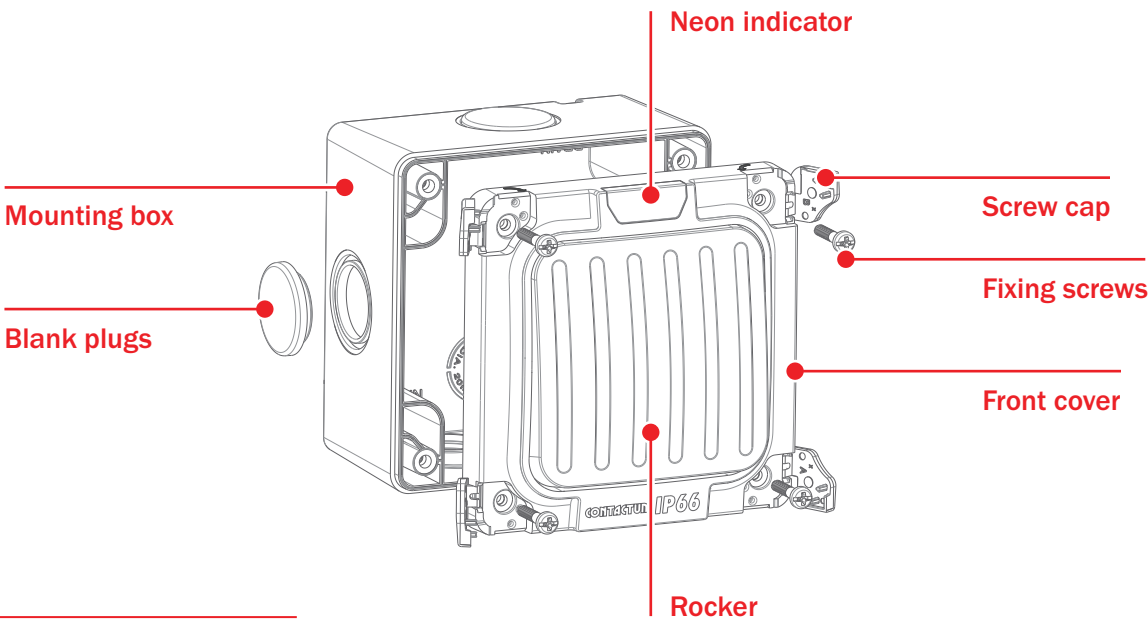
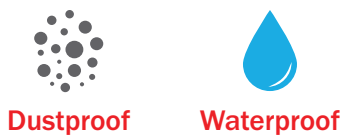
## Contents

Product Features	3
Product Details	4
Switches	5
Enclosures and Covers	7

# Product Features

IP66 Weatherproof

The IP66 Weatherproof products comprise a robust thermoplastic enclosure and are intended for interior and exterior use wherever water and dust proofing are required.



## Technical Details:

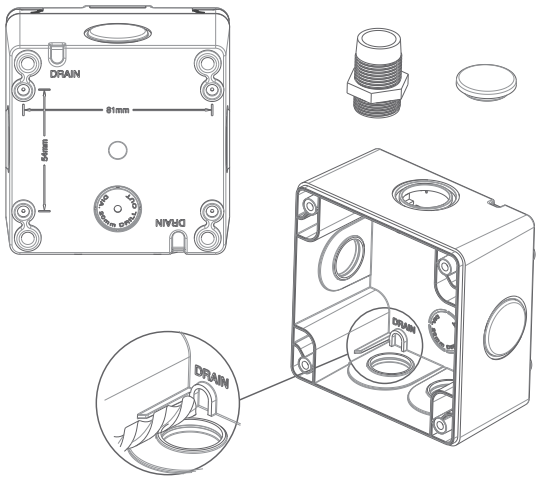
- IP66 Rated, Complies with BS EN 60529
- 20A Switching, Complies with BS EN 60669-1

## Key Features

- + Easy installation
- + Tough Material
- + Lockable Cover

The IP66 Weatherproof products need to be fitted with waterproof cables or conduit entries to maintain their IP rating once installed.

It offers an easy and safe wall mounting control for equipment such as lighting, bell, garden water pumps etc.





# Product Details

All products are rated with international protection code IP66 which means that the sealed construction provides protection against the ingress of water and dust.

IP66 Weatherproof

## IP66 Switch with Mounting Box

**Width**  
96mm

**Height**  
96mm

**Depth**  
74mm



## IP55 Flush Switch

**Width**  
96mm

**Height**  
96mm

**Depth**  
39.3mm



## IP66 Socket Enclosure with Mounting Box

**1 Gang**

**Width**  
114mm

**Height**  
155mm

**Depth**  
86mm



**2 Gang**

**Width**  
174mm

**Height**  
155mm

**Depth**  
86mm



## IP55 Flush Enclosure Cover

**1 Gang**

**Width**  
117mm

**Height**  
156mm

**Depth**  
51mm



**2 Gang**

**Width**  
177mm

**Height**  
156mm

**Depth**  
51mm



# Switches



Surface

## Surface Single Pole Switches

**IP66:**  
20A rating



**Product:**  
Int Switch  
2 way switch  
Press Switch  
Bell Push Switch

**1 Gang**

**Product Code:**  
SRA4810  
SRA4812  
SRA4820  
SRA4836

**Product:**  
2 way switch  
Int Switch

**2 Gang**

**Product Code:**  
SRA4822  
SRA4823

## Surface Double Pole Switches

**IP66:**  
20A rating



**Product:**  
DP Switch

**1 Gang**

**Product Code:**  
SRA4814

**Product:**  
DP Switch

**2 Gang**

**Product Code:**  
SRA4824

# Switches



Flush

## Flush Single Pole Switches

**IP55:**  
20A rating



**Product:**

Int switch  
2 Way switch  
Press switch  
Bell push switch

### 1 Gang

**Product Code:**

SRA4810F  
SRA4812F  
SRA4820F  
SRA4836F

### 2 Gang

**Product:**

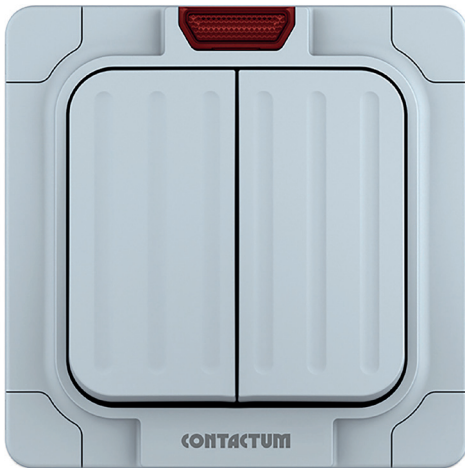
2 Way switch  
Int switch

**Product Code:**

SRA4822F  
SRA4823F

## Flush Double Pole Switches

**IP55:**  
20A rating



**Product:**

DP switch

### 1 Gang

**Product Code:**

SRA4814F

### 2 Gang

**Product:**

DP switch

**Product Code:**

SRA4824F

## Weatherproof



## Enclosures

**IP66**



### 1 Gang

**Product:**

Empty Enclosure  
Switched Socket  
Fuse Connection Unit

**Product Code:**

SRA4011\*  
SRA4346  
SRA4366



### 2 Gang

**Product:**

Empty Enclosure  
Switched Socket  
RCD Latching Socket

**Product Code:**

SRA4022\*  
SRA4356  
SRA4900

\*Compatible with alfanar and Reflect sockets

## Front Covers

**IP55**



### 1 Gang

**Product:**

Front Cover Only

**Product Code:**

SRA4011F\*

### 2 Gang

**Product:**

Front Cover Only

**Product Code:**

SRA4022F\*

\*Compatible with alfanar and Reflect sockets

# IP66 Weatherproof



Dustproof



Waterproof



## CONTACTUM

[www.contactum.co.uk](http://www.contactum.co.uk)

020 8208 7419

[sales@contactum.co.uk](mailto:sales@contactum.co.uk)



@Contactumltd



Contactum Ltd



@Contactumltd



Contactum Ltd



@Contactumltd



Scan me for more  
info on our website



IP66WB - RevLev01



5 056009 598968 >