

## Defender 2.0 Consumer Unit

Designed for Modern Living & Effortless Installation.

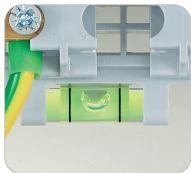
Supported by a full range of circuit protection devices including MCB's, bi-directional 1P+N RCBO's and AFDD's.



Scan to view the Defender Consumer Units brochure



### Internal features



#### Spirit level

High quality spirit level. For added installation guidance (Surface Mounted version only)



#### Cable clamp

Meter Tails Retention Clamp Standard on all Defender 2.0 Consumer Units



#### Type 2 SPD with MCB

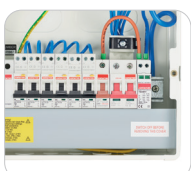
Type 2 Surge Protection Kit with MCB and cables

COMING SOON



#### Type 2 Compact SPD

Type 2 Surge Protection Kit with cables, no MCB required



#### Busbar cover

Easy secure clip-in busbar cover – For added safety, faster installation and maximum flexibility

### External features



#### Locking kits available

Reliable locking kit for controlled, authorised access



#### Retained screws

Fitted on the enclosure lid for ease of fixing and convenience, no more lost cover screws



#### Unique hinged lid design

Lid can be latched open for convenience during installation tests and circuit identification



#### Finger operated mechanical lid clip

Safety feature. Needs to be pressed to be opened



#### Modern curved design with surface and flush mount option

For high-demand installations where the consumer unit forms part of modern living environments