

CONTACTUM



DEFENDER

Defender Consumer Units

A comprehensive range of single phase consumer units
Compliant with BS7671 18th Edition Wiring Regulations
Tested in accordance to BS EN 61439-3

CONTACTUM

—Quality by design

Established in 1936, Contactum is a proud British brand with a distinguished heritage in the electrical industry. For nearly a century, we have been a trusted name in the supply of wiring accessories, circuit protection devices, and control products across residential, commercial, and industrial sectors.

Our reputation has been built on a foundation of quality, safety, and a design-led approach, with a focus on delivering products that meet the unique demands of the UK market.

Offering the latest solution-led wiring accessories to award-winning consumer units and commercial switchgear, Contactum delivers reliable, specification-grade electrical solutions designed to meet the evolving needs of electricians, contractors, wholesalers, and specifiers.

We pride ourselves on combining performance, compliance, and visual appeal across our ranges, supported by robust technical expertise and responsive customer service.



To support our commitment to excellence, Contactum operates an ISO Integrated Management System, covering quality (ISO 9001), environmental (ISO 14001), and occupational health & safety (ISO 45001) standards. This ensures that every aspect of our operations — from product development to customer service — is underpinned by internationally recognised best practices.

Further reinforcing our dedication to sustainability and corporate responsibility, Contactum has recently been awarded a medal-level rating by Eco Vadis, a leading global assessment platform for environmental, social, and ethical performance.

This achievement highlights our continuous efforts to operate transparently, reduce environmental impact, and promote responsible business practices throughout our supply chain.

ecovadis



alfanar

As part of the alfanar group, Contactum benefits from the backing of a global leader in electrical manufacturing, energy, and infrastructure. Headquartered in Riyadh, Saudi Arabia, alfanar brings world-class scale, engineering excellence, and advanced production capabilities to the partnership.

A large proportion of Contactum's product offering is manufactured at alfanar Industrial City — a cutting-edge 700,000 square metre facility in Riyadh. This ISO-certified complex is equipped with automated production lines, quality testing laboratories, and R&D centres, staffed by skilled professionals committed to delivering consistent quality and innovation across all markets.



By combining the local insight and agility of a UK-based brand with the scale, resources, and innovation of a global manufacturing group, Contactum remains uniquely positioned to serve the needs of the modern electrical market. Whether supporting new build developments, refurbishment projects, or infrastructure upgrades, Contactum continues to deliver dependable solutions trusted by professionals across the UK and beyond.



Contents

| | |
|---------------------------------------------|----|
| 18th Edition | 4 |
| Design Service | 5 |
| Defender 1.0 | 6 |
| Defender 1.0 Features | 7 |
| Defender 1.0 Consumer Units | 8 |
| Defender 2.0 | 11 |
| Defender 2.0 Features | 12 |
| Defender 2.0 Surface Mounted Consumer Units | 14 |
| Defender 2.0 Flush Mounted Consumer Units | 18 |
| Isolators | 20 |
| RCDs | 20 |
| MCBs | 21 |
| eRCBs | 21 |
| AFDD | 22 |
| Surge Arrestor | 23 |
| Accessories | 23 |
| Dimensions | 24 |
| Test Certificates | 26 |

When AMD2 of the 18th Edition of the wiring regulations was released in 2022, significant changes were implemented that impacted the decisions made by manufacturers, designers and installers of consumer units and incorporated circuit protection devices.

(421.1.7) Arc Fault Detection

As a means of providing additional protection against fire caused by arc faults in AC final circuits, Arc Fault Detection Devices conforming to IEC/BS EN 62606 are required in certain circumstances and recommended in others. Contactum have introduced a range to support contractors in meeting these obligations.

(443.4) Overvoltage (Surge) Protection

Although not a new addition to the wiring regulations, an emphasis has been put on the merits of installing SPDs and now these devices are becoming a standard inclusion within Consumer Units. Protection against transient overvoltages shall be provided where the consequence caused by the overvoltage could result in serious injury to, or loss of human life and significant financial or data loss.

For all other cases, protection against transient overvoltages shall be provided unless the owner of the installation declares it is not required due to any loss or damage being tolerable and they accept the risk of damage to equipment and any consequential loss.

(531.3.3) RCD Selection

Depending on their behaviour in the presence of DC components and frequencies, an appropriate RCD shall be selected from the different types of RCDs that exist. With the growing number of electronic devices in the home, Type A RCDs are now seen as the general standard and Contactum provide Type A as standard on all RCCBs and RCBOs.

(536.4.3.2) Overload Protection of RCCBs & Switches

Devices of this nature do not normally provide protection against overload. These devices shall now be protected by an appropriately rated overcurrent protective device upstream of the RCCB or switch and be installed according to the manufacturers instructions.

Overload protection of the switch or RCCB can now not be solely based on the use of diversity factors of the downstream circuits. Contactum provides clear InA ratings for every Consumer Unit and advise that this rating must not exceed the upstream OCPD rating.

BS7671:2018 AMD3:2024

An amendment to the wiring regulations (AMD3) was introduced on the 31st July 2024. This amendment provides for the inclusion of two new definitions and one new regulation relating to the use of bidirectional and unidirectional circuit protection devices.

Definitions:

+ Bidirectional Protective Device

A protective device where it is intended by the manufacturer that a source of supply is connected to either or both sets of connection terminals

+ Unidirectional Protective Device

A protective device designed by the manufacturer to allow a power source to be connected only to a specific set of connection terminals.

Regulation 530.3.201

Selection and erection of equipment for protection shall take account of appropriate use of either a unidirectional protective device or a bidirectional device.

Product standards (as listed in appendix 1) for some protective devices, including RCCBs, RCBOs, circuit breakers and AFDDs, require these devices to be marked to indicate if they are unidirectional e.g. “in” and “out” or “Line” and “Load” arrows.

Contactum Design Service for Circuit Protection

Our bespoke design service for factory-assembled units ensures a customised solution tailored to your project's needs.

Tailored Circuit Protection Solutions

Our expert team will help you design the optimal configuration for your project.

Using both standard and non-standard Contactum devices and accessories, we supply fully assembled units ready for immediate installation.

If your project requires fully customised solutions or pre-fitted outgoing devices, our service offers:

- + Reduced on-site labour time
- + Seamless project continuity
- + Enhanced efficiency and reliability

How it Works:

1. Contact our dedicated contractor sales team via the email below.
2. Discuss your requirements, agree on a design configuration, and confirm quantities.
(Minimum order quantities apply)
3. Receive a tailored quotation based on your exact needs.
4. Place an order through one of our selected distributor partners.
5. We assemble and dispatch your boards—fully configured and ready for installation.

**Contact our
Customer Service Team:**

Telephone:
0208 208 7419

Email the contractors sales team:
contractors@contactum.co.uk

Why Choose Our Design Service?

Our design service is ideal for all project applications, ensuring compliance, continuity, and peace of mind. We collaborate closely with M&E Consultants, Electrical Contractors, and Housing Developers to deliver efficient and seamless solutions.

- + Dedicated contractor sales team
- + Fast turnaround from enquiry to delivery
- + Reduced on-site labour costs
- + Minimised waste from packaging
- + No loose products on-site
- + Correctly configured boards for faster installation
- + Available for all circuit protection ranges



CONTACTUM
—Quality by design

Choosing the Right Solution Without Compromise

At Contactum, we understand that different installations have different demands.

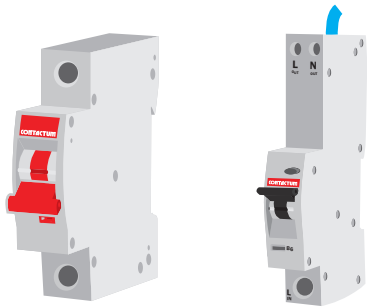
That's why we offer two distinct consumer unit solutions:

Defender 1.0 and Defender 2.0

Each designed to meet specific needs while maintaining superior quality, compliance, and safety.

Both designs are supported with a full range 6kA circuit protection devices including:

- MCB's** B or C curve
- RCBO's** Single Pole or Switched Neutral with Bi-Directional power flow compatibility
- AFDD's** MCB or RCBO functionality



Defender 1.0 Consumer Unit

Affordable Reliability Without Compromise

The Defender 1.0 consumer unit is engineered to provide a cost-effective solution while ensuring uncompromised quality, safety, and compliance. Developed to offer exceptional value, it delivers everything needed for a reliable installation without unnecessary extras.

- + **Superior Construction:** Built with high-quality materials for durability and longevity.
- + **Fully Compliant:** Meets BS EN 61439-3 and BS7671 standards for guaranteed safety.
- + **Essential Features:** Designed for straightforward installations with all the fundamental protections required.
- + **Value for Money:** A practical and cost effective choice without sacrificing performance.



Perfect for:

- + **Standard residential installations**
- + **Cost-conscious projects requiring compliance and quality**
- + **Installers looking for a no-fuss, reliable consumer unit**

Which One is Right for You?

Whether you need a cost-effective, compliant solution (Defender 1.0) or a premium, feature-rich consumer unit designed for modern living (Defender 2.0), we have the perfect fit for your project. **Turn to page 11 to discover Defender 2.0 in detail.**

Both Defender 1.0 and Defender 2.0 are built to last, protect, and perform—the choice comes down to your project's specific needs.

Some of the most important aspects are featured here:

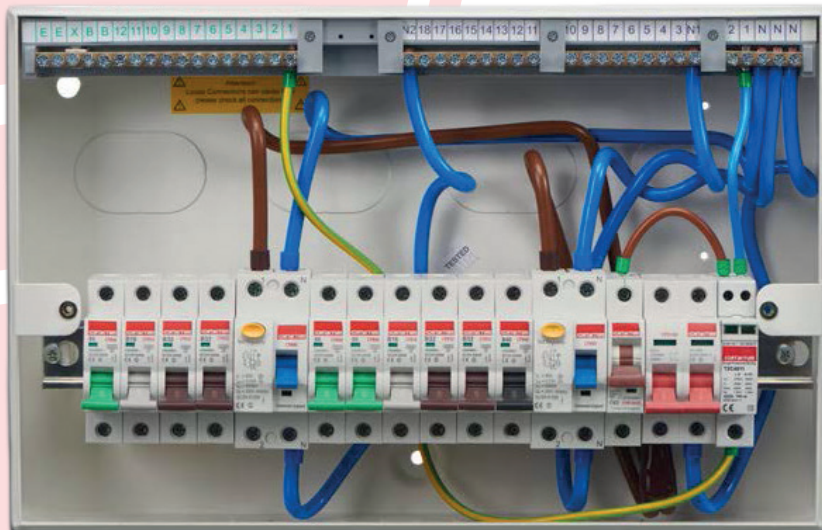
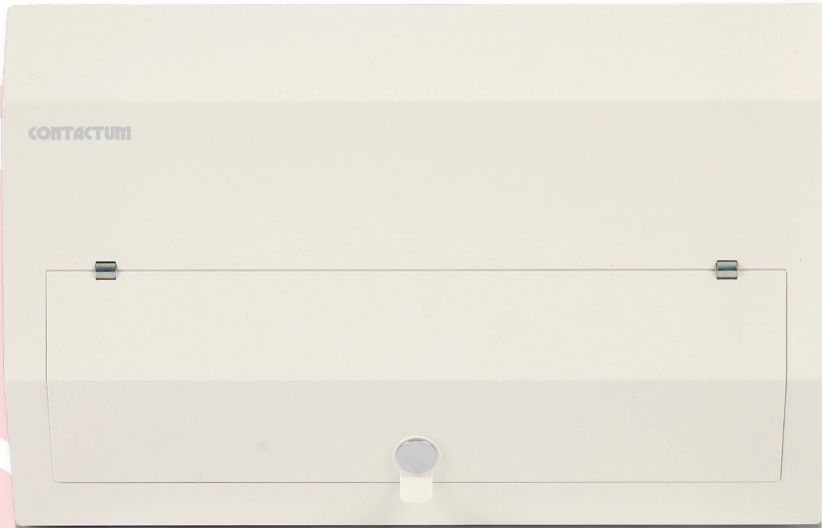
All Defender 1.0 Consumer Units are packed with enhanced features and benefits.

- + Tested by reputed third party in accordance with BS EN 61439-3: 2012 including Annex ZB
- + Up to 100A (InA) rated
- + Type A RCDs and RCBOs as standard
- + Stackable enclosures



Features

I



External Features



Secure hinge design



Locking kits available

+ Stackable enclosure

Allowing unlimited configurations

+ Comprehensive range

Comprising 10 different enclosures sizes

+ Modern sleek design

Suitable for all installations

+ Degree of protection IP4X

Internal Features

+ Maximum cable space

Extensive number of cable entry points allowing easy installation

+ Flexible Board Configuration

To enable optimal combination of RCD, MCB and RCBO use

+ Up to 22 module board as standard

Combine boards to increase number of outgoing ways

+ Pre-populated Configurations Available

+ Full metal din rail

For secure device fixing

Defender 1.0

Switch Disconnect Incomer Consumer Units Without & With Surge Protection

- 2 Way:**
63A CU ISO Incomer
- 4 - 20 Way:**
100A CU ISO Incomer



Stand Alone SPD Enclosure

| | |
|--------------|----------------------|
| Size: | Product Code: |
| 0 Way | DD006SPMS |

63A Rating

| | |
|--------------|----------------------|
| Size: | Product Code: |
| 2 Way | DD026MS |

100A Rating

| Size: | Without SPD | With SPD |
|---------------------------------------|----------------------|----------------------|
| | Product Code: | Product Code: |
| 4 Way | DD041MS | DD041SPMS |
| 6 Way | DD061MS | |
| 8 Way | | DD081SPMS |
| 10 Way | DD101MS | DD101SPMS |
| 12 Way | DD121MS | DD121SPMS |
| 14 Way | DD141MS | DD141SPMS |
| 16 Way | DD161MS | DD161SPMS |
| 18 Way | DD181MS | DD181SPMS |
| 20 Way | DD201MS | |
| Populated | | |
| 10 Way Switch + 6 eRCBO + 4 Blanks | | DD101SPMS-P01 |

RCD Incomer Consumer Units

- 4 - 20 Way:**
80A CU ISO Incomer
+ 1 RCD Type A



80A Rating

| | |
|--------------|----------------------|
| Size: | Product Code: |
| 4 Way | DR048AMS |
| 6 Way | DR068AMS |
| 10 Way | DR108AMS |
| 14 Way | DR148AMS |
| 16 Way | DR168AMS |
| 20 Way | DR208AMS |

Split Load Consumer Units

8 - 18 Way:
80A CU ISO Incomer
+ 1 RCD Type A



Size:

- 8 Way
- 10 Way
- 12 Way
- 14 Way
- 18 Way

80A Rating

Product Code:

- DS0818AMS
- DS1018AMS
- DS1218AMS
- DS1418AMS
- DS1818AMS

Flexible High Integrity Split Load Dual RCD Consumer Units Without & With Surge Protection

6 - 16 Way:
80A CU ISO Incomer
+ 2 RCD Type A



Size:

- 6 Way
- 8 Way
- 10 Way
- 12 Way
- 14 Way
- 16 Way

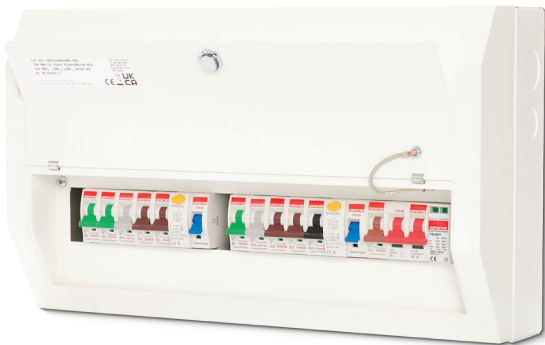
80A Rating

| | Without SPD | With SPD |
|---------------|-------------|---------------|
| Product Code: | | |
| | DDS06188AMS | DDS06188ASPMS |
| | DDS08188AMS | DDS08188ASPMS |
| | DDS10188AMS | DDS10188ASPMS |
| | DDS12188AMS | DDS12188ASPMS |
| | DDS14188AMS | DDS14188ASPMS |
| | DDS16188AMS | |

Populated

| | | |
|----------------------|-----------------|-------------------|
| 6 Way c/w + 6 MCBs | DDS06188AMS-P01 | |
| 8 Way c/w + 8 MCBs | DDS08188AMS-P01 | |
| 10 Way c/w + 10 MCBs | DDS10188AMS-P01 | DDS10188ASPMS-P01 |
| 12 Way c/w + 10 MCBs | DDS12188AMS-P01 | DDS12188ASPMS-P01 |
| 14 Way c/w + 10 MCBs | DDS14188AMS-P01 | DDS14188ASPMS-P01 |
| 16 Way c/w + 10 MCBs | DDS16188AMS-P01 | |

Other populated configurations available on request



Empty Enclosures

4 - 22 Mod:
IP4X Mod Metal Encl
c/w Earth/ Neutral



| Size: | Product Code: |
|--------|---------------|
| 2 Mod | DME02MS |
| 4 Mod | DME04MS |
| 6 Mod | DME06MS |
| 8 Mod | DME08MS |
| 12 Mod | DME012MS |
| 14 Mod | DME014MS |
| 16 Mod | DME016MS |
| 18 Mod | DME018MS |
| 20 Mod | DME020MS |
| 22 Mod | DME022MS |

Garage Unit & Shower Enclosures

2 Way:
63A CU RCD
Type A Incomer



Garage Unit:
63A RCD Type A + 16A MCB
+ 6A MCB

| Size: | Product Code: |
|-----------|---------------|
| 2 Way 63A | DR026AMS |

| Populated | |
|----------------------|--------------|
| Garage Unit 63A | DR026AMS-P01 |
| Shower Enc 0 Way 40A | DSPE1AMS |
| Shower Enc 1 Way 50A | DSPE2AMS |
| Shower Enc 2 Way 63A | DSPE3AMS |

Other populated configurations available on request

Shower Enclosures:
0 O/G Way 40A RCBO Type A

1 O/G Way 63A RCD Type A
+ 50A MCB

2 O/G Way 63A RCD Type A
+ 32A MCB + 16A MCB



Rear Cable Top Entry Bracket

12 - 22 Mod:
Rear Cable
Top Entry Bracket



| Size: | Product Code: |
|--------|---------------|
| 12 Mod | RCEB-TE-12MOD |
| 14 Mod | RCEB-TE-14MOD |
| 16 Mod | RCEB-TE-16MOD |
| 18 Mod | RCEB-TE-18MOD |
| 20 Mod | RCEB-TE-20MOD |
| 22 Mod | RCEB-TE-22MOD |

Technical Data for Defender 1.0:

| | | | |
|-------------------------------|-----------------------------------------------|--------------------------------------------------------------------------------------------------------------------------------------------------------------------------------------------|---------|
| Standard | BS EN 61439-3: 2012 Including Annex ZB (16kA) | Impact Rating | IK05 |
| Max Current Rating (InA) * | 100A | RAL Colour | 9016 |
| Rated Operating Voltage (Ue) | 230V AC 50Hz | Fixing | Surface |
| Short Circuit Withstand (Icw) | 10kA 0.1 sec | Terminal Torque (N.m) | 1.5 |
| Poles | 1 | Module Width | 17.8mm |
| Cable Entry/Exit (IK0's) | 20, 25 & 32mm | Please see product description for individual enclosure InA rating as each Consumer Unit differs. The upstream over current protection device must not exceed the enclosure InA rating. | |
| Material | 1.2mm Sheet Steel | | |
| IP Protection Rating | IP2XC/IP4X | | |

Choosing the Right Solution Without Compromise

At Contactum, we understand that different installations have different demands.

That's why we offer two distinct consumer unit solutions:

Defender 1.0 and Defender 2.0

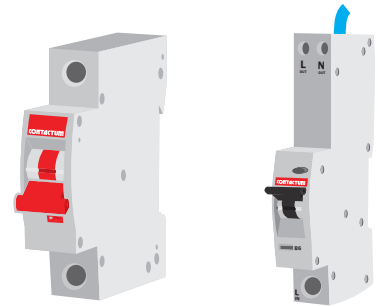
Each designed to meet specific needs while maintaining superior quality, compliance, and safety.

Both designs are supported with a full range 6kA circuit protection devices including:

MCB's B or C curve

RCBO's Single Pole or Switched Neutral with Bi-Directional power flow compatibility

AFDD's MCB or RCBO functionality

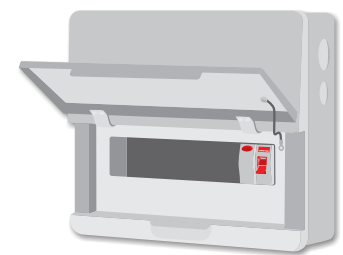


Defender 2.0 Consumer Unit

Designed for Modern Living & Effortless Installation

Building upon the robust foundation of the Defender 1.0, the Defender 2.0 consumer unit introduces an enhanced experience tailored for both the installer and end user. Thoughtfully designed with modern aesthetics, convenience, and innovation in mind, Defender 2.0 is the premium choice for contemporary electrical installations

- + **Installer-Friendly Features:** Time-saving innovations make installation smoother and faster.
- + **Enhanced Safety & Compliance:** Fully meets BS EN 61439-3 and BS7671 while offering additional safety features.
- + **Aesthetically Pleasing:** A sleek, modern design that blends seamlessly into modern living environments in both surface and flush mounted options.
- + **Expanded Range & Configurations:** Available in surface and flush mounted options, with single or dual-row configurations to accommodate different installation requirements.



Perfect for:

- + High-end multi-residential installations requiring superior technical performance
- + Installers seeking premium ease-of-installation features
- + Designers and homeowners who value both safety and stylish design

Which One is Right for You?

Whether you need a cost-effective, compliant solution (Defender 1.0) or a premium, feature-rich consumer unit designed for modern living (Defender 2.0), we have the perfect fit for your project.

Both Defender 1.0 and Defender 2.0 are built to last, protect, and perform - the choice comes down to your project's specific needs.

Some of the most important aspects are featured here:

All Defender 2.0 Consumer Units are packed with enhanced features and benefits.

- + Tested by reputed third party in accordance with BS EN 61439-3: 2012 including Annex ZB
- + Up to 100A (InA) rated
- + Type A RCDs and RCBOs as standard
- + Surface and Flush Mounted versions available
- + Up to 24 modules Single Row
- + Up to 44 modules Dual Row



NEW Generation

II



External Features

+ UV Powder coated paint

Colour finish RAL9016 seamlessly blending into today's modern residential installations

+ Extensive number of cable entry points

Allowing easy installation

+ Modern curved design with flush front lid

For the most demanding and visible installations blending in with today's modern living environments where the Consumer Unit is on show

+ Designed by Micieli

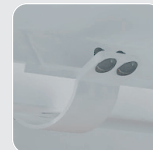


Locking kits available



Retained screws

Fitted on the enclosure lid for ease of fixing and convenience, no more lost cover screws



Unique hinged lid design

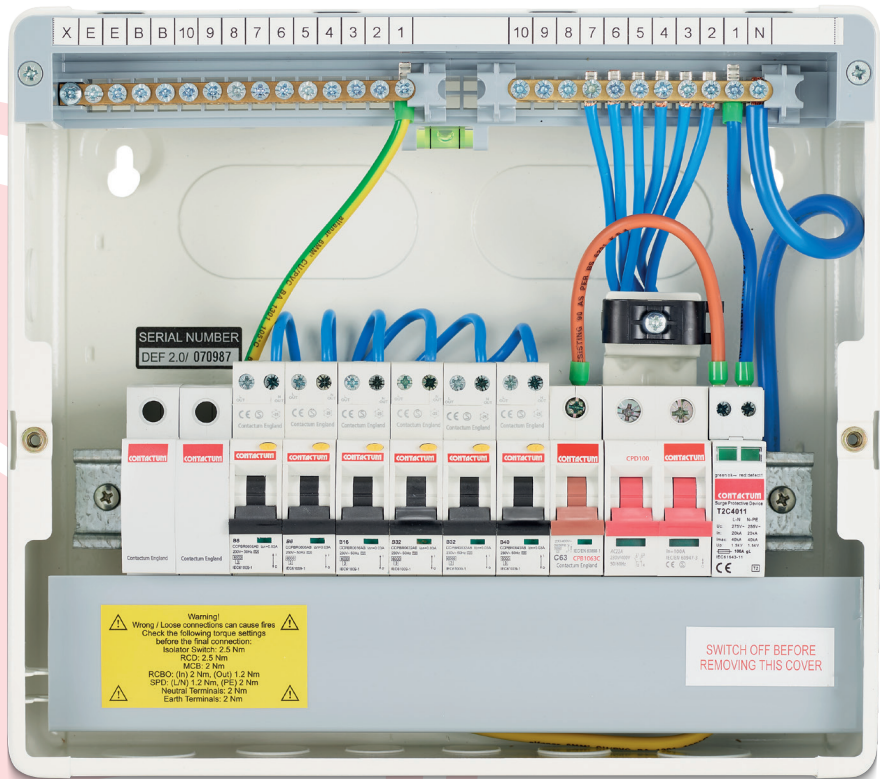
Lid can be latched open for convenience during installation tests and circuit identification



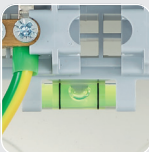
Finger operated mechanical lid clip

Safety feature. Needs to be pressed to be opened

NEW Generation



Internal Features



Spirit level
High quality spirit level.
For added installation
guidance (Surface
Mounted version only)



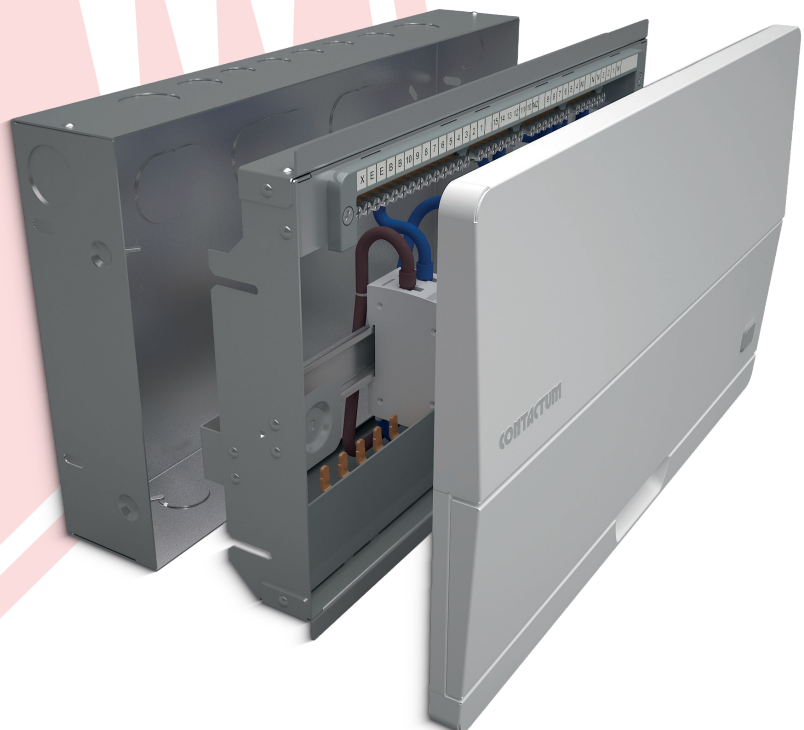
Cable clamp
Meter Tails Retention
Clamp Standard on all
Defender 2.0
Consumer Units



**Surge protection
device**
Available in kit form or
pre-fitted



Busbar cover
Snappable copper
floating busbar with
easy secure clip-in
busbar cover –
For faster installation
and maximum flexibility



Flush Features

- + Full metal din rail**
For secure device fixing
- + Flush front lid**
Only protrudes 23mm when installed
- + Adjustable assembly frame**
Allowing for different plasterboard
depths
- + 2 Part flush design**
Allowing for 1st fix and 2nd fix Installation

Switch Disconnect Incomer Consumer Units

- 2 - 10 Way:**
63A
CU ISO Incomer
- 2 Way:**
80A
CU ISO Incomerr
- 4 - 22 Way:**
100A
CU ISO Incomer
- 14 - 42 Way:**
100A Dual Row
CU ISO Incomer



| 63A Rating | |
|-------------------------------|---------------|
| Size: | Product Code: |
| 2 Way | SDD026MS |
| 6 Way | SDD066MS |
| 10 Way | SDD106MS |
| Populated | |
| 10 Way + 6 eRCBO + 4 Blank | SDD106MS-P01 |

| 80A Rating | |
|------------|---------------|
| Size: | Product Code: |
| 2 Way | SDD028MS |

| 100A Rating | | |
|-------------------------------|---------------|---------------|
| | Without SPD | With SPD |
| Size: | Product Code: | Product Code: |
| 4 Way | SDD041MS | SDD041SPMS |
| 6 Way | SDD061MS | SDD061SPMS |
| 8 Way | SDD081MS | SDD081SPMS |
| 10 Way | SDD101MS | SDD101SPMS |
| 12 Way | SDD121MS | SDD121SPMS |
| 14 Way | SDD141MS | SDD141SPMS |
| 16 Way | SDD161MS | SDD161SPMS |
| 18 Way | SDD181MS | SDD181SPMS |
| 20 Way | SDD201MS | SDD201SPMS |
| 22 Way | SDD221MS | |
| Dual Row | | |
| 6 + 8 Way (Total 14 way) | SDD2141MS | |
| 14 + 16 Way (Total 30 way) | SDD301MS | |
| 20 + 22 Way (Total 42 way) | SDD421MS | |
| Populated | | |
| 10 Way + 6 eRCBO + 4 Blank | SDD101MS-P01 | |

RCD Incomer Consumer Units

- 6 - 10 Way:**
63A CU RCD
Type A Incomer
- 6 Way:**
80A CU RCD
Type A Incomer
- 10 - 20 Way:**
100A CU RCD
Type A Incomer



| 63A Rating | |
|------------|---------------|
| Size: | Product Code: |
| 6 Way | SDR066AMS |
| 10 Way | SDR106AMS |

| 80A Rating | |
|------------|---------------|
| Size: | Product Code: |
| 6 Way | SDR068AMS |

| 100A Rating | |
|-------------|---------------|
| Size: | Product Code: |
| 10 Way | SDR101AMS |
| 14 Way | SDR141AMS |
| 16 Way | SDR161AMS |
| 20 Way | SDR201AMS |

Garage Unit

- 2 Way:**
63A CU RCD
Type A Incomer
- Garage Unit:**
63A RCD Type A + 16A MCB
+ 6A MCB



| 63A Rating | |
|-------------|---------------|
| Size: | Product Code: |
| 2 Way | SDR026AMS |
| Populated | |
| Garage Unit | SDR026AMS-P01 |

Other populated configurations available on request

Split Load Consumer Units

- 8 - 16 Way:**
63A CU ISO Incomer
+ 1 RCD Type A
- 8 - 20 Way:**
100A CU ISO Incomer
+ 1 RCD Type A



| 63A Rating | |
|------------|---------------|
| Size: | Product Code: |
| 8 Way | SDS0816AMS |
| 12 Way | SDS1216AMS |
| 14 Way | SDS1416AMS |
| 16 Way | SDS1616AMS |

| 100A Rating | |
|-------------|---------------|
| Size: | Product Code: |
| 8 Way | SDS0811AMS |
| 12 Way | SDS1211AMS |
| 14 Way | SDS1411AMS |
| 16 Way | SDS1611AMS |
| 18 Way | SDS1811AMS |
| 20 Way | SDS2011AMS |

Flexible High Integrity Split Load Dual
RCD Consumer Units

- 6 - 16 Way:**
63A CU ISO Incomer
+ 2 RCD Type A
- 6 - 18 Way:**
100A CU ISO Incomer
+ 2 RCD Type A

- 26 - 38 Way:**
100A Dual Row CU ISO Incomer
+ 2 RCD Type A



| 63A Rating | | |
|----------------|------------------|----------------|
| | Without SPD | With SPD |
| Size: | Product Code: | Product Code: |
| 6 Way | SDDS06166AMS | |
| 8 Way | | SDDS08166ASPMS |
| 10 Way | SDDS10166AMS | SDDS10166ASPMS |
| 12 Way | SDDS12166AMS | SDDS12166ASPMS |
| 14 Way | SDDS14166AMS | SDDS14166ASPMS |
| 16 Way | SDDS16166AMS | |
| Populated | | |
| 6 Way + 6MCB | SDDS06166AMS-P01 | |
| 10 Way + 10MCB | SDDS10166AMS-P01 | |
| 12 Way + 10MCB | SDDS12166AMS-P01 | |

Other populated configurations available on request

| 100A Rating | | |
|----------------------------------------------|------------------|--------------------|
| | Without SPD | With SPD |
| Size: | Product Code: | Product Code: |
| 6 Way | SDDS06111AMS | |
| 8 Way | | SDDS08111ASPMS |
| 10 Way | SDDS10111AMS | SDDS10111ASPMS |
| 12 Way | SDDS12111AMS | SDDS12111ASPMS |
| 14 Way | SDDS14111AMS | SDDS14111ASPMS |
| 16 Way | SDDS16111AMS | SDDS16111ASPMS |
| 18 Way | SDDS18111AMS | |
| Dual Row | | |
| 12 + 14 Way (Total 26 way) + 2 RCD Type A | SDDS26111AMS | |
| 18 + 20 Way (Total 38 way) + 2 RCD Type A | SDDS38111AMS | |
| Populated | | |
| 6 Way + 6 MCB | SDDS06111AMS-P01 | |
| 10 Way + 10 MCB | SDDS10111AMS-P01 | SDDS10111ASPMS-P01 |
| 12 Way + 10 MCB | SDDS12111AMS-P01 | SDDS12111ASPMS-P01 |
| 14 Way + 10 MCB | SDDS14111AMS-P01 | SDDS14111ASPMS-P01 |
| 16 Way + 10 MCB | SDDS16111AMS-P01 | SDDS16111ASPMS-P01 |
| 18 Way + 10 MCB | SDDS18111AMS-P01 | |

Empty Enclosures

4 - 24 Mod:
IP2XC/IP4X Mod Metal Encl
c/w Earth/ Neutral



| Size: | Product Code: |
|--------|---------------|
| 4 Mod | SDME04MS |
| 6 Mod | SDME06MS |
| 8 Mod | SDME08MS |
| 10 Mod | SDME010MS |
| 12 Mod | SDME012MS |
| 14 Mod | SDME014MS |
| 16 Mod | SDME016MS |
| 18 Mod | SDME018MS |
| 20 Mod | SDME020MS |
| 22 Mod | SDME022MS |
| 24 Mod | SDME024MS |

Rear Cable Top Entry Bracket

12 - 24 Mod:
Rear Cable
Top Entry Bracket



| Size: | Product Code: |
|--------|----------------|
| 12 Mod | RCEB-TE-12M-D2 |
| 16 Mod | RCEB-TE-16M-D2 |
| 18 Mod | RCEB-TE-18M-D2 |
| 20 Mod | RCEB-TE-20M-D2 |
| 22 Mod | RCEB-TE-22M-D2 |
| 24 Mod | RCEB-TE-24M-D2 |

Technical Data for Surface CU:

| | | | |
|-------------------------------|-----------------------------------------------|--------------------------------------------------------------------------------------------------------------------------------------------------------------------------------------------|---------|
| Standard | BS EN 61439-3: 2012 Including Annex ZB (16kA) | Impact Rating | IK05 |
| Max Current Rating (InA) * | 100A | RAL Colour | 9016 |
| Rated Operating Voltage (Ue) | 230V AC 50Hz | Fixing | Surface |
| Short Circuit Withstand (Icw) | 10kA 0.1 sec | Terminal Torque (N.m) | 1.5 |
| Poles | 1 | Module Width | 17.8mm |
| Cable Entry/Exit (KO's) | 20, 25 & 32mm | Please see product description for individual enclosure InA rating as each Consumer Unit differs. The upstream over current protection device must not exceed the enclosure InA rating. | |
| Material | 1.2mm Sheet Steel | | |
| IP Protection Rating | IP2XC/IP4X | | |

Switch Disconnect Incomer Consumer Units

- 6 - 8 Way:**

80A Flush Mounted
CU ISO Incomer
- 8 - 18 Way:**

100A Flush Mounted
CU ISO Incomer
- 14 - 30 Way:**

100A Flush Mounted Dual Row
CU ISO Incomer



| 80A Rating | |
|------------|---------------|
| Size: | Product Code: |
| 6 Way | FDD068MS |
| 8 Way | FDD088MS |

| 100A Rating | | |
|----------------------------|---------------|---------------|
| Size: | Without SPD | With SPD |
| | Product Code: | Product Code: |
| 8 Way | | FDD081SPMS |
| 10 Way | FDD101MS | |
| 12 Way | | FDD121SPMS |
| 14 Way | FDD141MS | FDD141SPMS |
| 16 Way | FDD161MS | FDD161SPMS |
| 18 Way | FDD181MS | |
| Dual Row | | |
| Size: | Product Code: | |
| 6 + 8 Way (Total 14 way) | FDD2141MS | |
| 14 + 16 Way (Total 30 way) | FDD301MS | |

RCD Incomer Consumer Units

- 6 Way:**

80A Flush Mounted
CU RCD Type A Incomer
- 10 - 18 Way:**

100A Flush Mounted
CU RCD Type A Incomer



| 80A Rating | |
|------------|---------------|
| Size: | Product Code: |
| 6 Way | FDR068AMS |

| 100A Rating | |
|-------------|---------------|
| Size: | Product Code: |
| 10 Way | FDR101AMS |
| 14 Way | FDR141AMS |
| 16 Way | FDR161AMS |
| 18 Way | FDR181AMS |

Flexible High Integrity Split Load Dual RCD Consumer Units

6 - 12 Way:
63A CU ISO Incomer
+ 2 RCD Type A



| 63A Rating | |
|---------------|----------------|
| Without SPD | With SPD |
| Product Code: | Product Code: |
| 6 Way | FDDS06166AMS |
| 10 Way | FDDS10166AMS |
| 12 Way | FDDS12166AMS |
| | FDDS10166ASPMS |

Other populated configurations available on request

6 - 14 Way:
80A CU ISO Incomer
+ 2 RCD Type A



| 80A Rating | |
|---------------|----------------|
| Without SPD | With SPD |
| Product Code: | Product Code: |
| 6 Way | FDDS06188AMS |
| 10 Way | FDDS10188AMS |
| 12 Way | FDDS12188AMS |
| 14 Way | FDDS14188AMS |
| | FDDS10188ASPMS |

Technical Data for Flush CU:

| | | | |
|-------------------------------|-----------------------------------------------|--------------------------------------------------------------------------------------------------------------------------------------------------------------------------------------------|--------|
| Standard | BS EN 61439-3: 2012 Including Annex ZB (16kA) | Impact Rating | IK05 |
| Max Current Rating (InA) * | 100A | RAL Colour | 9016 |
| Rated Operating Voltage (Ue) | 230V AC 50Hz | Fixing | Flush |
| Short Circuit Withstand (Icw) | 10kA 0.1 sec | Terminal Torque (N.m) | 1.5 |
| Poles | 1 | Module Width | 17.8mm |
| Cable Entry/Exit (KO's) | 20, 25 & 32mm | Please see product description for individual enclosure InA rating as each Consumer Unit differs. The upstream over current protection device must not exceed the enclosure InA rating. | |
| Material | 1.2mm Sheet Steel | | |
| IP Protection Rating | IP2XC/IP4X | | |

Isolators



Product:
63A Double Pole Isolator

Product Code:
CPD63

Product:
100A Double Pole Isolator

Product Code:
CPD100

Technical Data for Isolator:

| | | | |
|-----------------------------------------|------------------------|--------------------------|---------------------------------|
| Standard | EN / IEC60947-3 | Mechanical endurance | 10000 |
| Rated currents | 63, 100A | Type of terminal | Lug type and Pin type |
| Rated voltage | 2 pole 230 AC 50/60Hz | Terminal capacity | Cables up to 50mm ² |
| Utilization category | AC-22A | Ambient temperature (oC) | -5oC to +40oC, Max.95% humidity |
| Icw | 12Ie, t=0.1s | Storage temperature (oC) | -40~+75 |
| Rated short-circuit making capacity Icn | 20Ie, t=0.1s | Altitude (meters) | Max. 2,000 |
| Rated making & breaking capacity | 3Ie, 1.05Ie, COS =0.65 | Protection degree | IP20 |
| Rated insulation voltage Ui | 690V | Installation | Mounting on 35mm DIN rail |
| Rated impulse withstand voltage Uimp | 4000V | Module Width | 17.8mm per pole |
| Electrical endurance | 1500 | | |

RCDs

30mA:
63A Type A
2 Pole RCD

30mA and 100mA:
100A Type A
2 Pole RCD



Rating:
30mA

Product Code:
CPR63A

Rating:
30mA
100mA
100mA + Time Delay

Product Code:
CPR100A
CPR1010A
CPR1010AT

Technical Data for RCD:

| | | | |
|----------------------------------------------|-------------------------------|------------------------------------------|---------------------------------|
| Standard | Confirming to EN / IEC61008-1 | Ambient temperature | -5oC to +40oC, Max. 95%humidity |
| Rated conditional short-circuit current, Icn | 6kA | Residual current disconnection time | ≤0.1s |
| Protection | Residual current | Rated residual current making & breaking | 500A for In=25,40A |
| Type | A | Capacity, IΔm | 630A for In=63,80,100 |
| Rated current, In | 63, 100 | Type of trip | Electro-magnetic release |
| Number of poles | 2(1+N) | Type of terminal | Lug type and Pin type |
| Rated sensitivity currents, IΔn | 30,100mA | Terminal capacity | Cables up to 35mm ² |
| Rated residual non-operating current | 0.5 X I Δn | Protection degree | IP20 |
| Rated impulse withstand voltage Uimp | 6000V | Installation | 35mm DIN rail |
| Rated voltages 2pole | 230VAC | | |

MCB 1P 6kA B and C Curve

3A - 63A:

1P 6kA B, C & D
Curve MCB



| Product Prefix: | Current Rating: | Trip Curve B or C: |
|---------------------|------------------------------|---------------------------------|
| CPB06 | 03 | - |
| CPB06 | 06 | - |
| CPB06 | 10 | - |
| CPB06 | 16 | - |
| CPB06 | 20 | - |
| CPB06 | 25 | - |
| CPB06 | 32 | - |
| CPB06 | 40 | - |
| CPB06 | 50 | - |
| CPB06 | 63 | - |
| Example: CPB06 06 B | Add code: 03 - 63 For rating | Add code: B or C for Curve type |

Technical Data for MCB:

| | | | |
|---------------------|--------------------------------------------------------------------------------------------------------------------------------|-------------------|-------------------------------------------------------------------------|
| Standard | Confirming to IEC/BS EN60898-1 | Number of poles | 1P |
| Breaking capacity | 6kA | Type of trip | Thermal / magnetic release |
| Protection | Against overload and short circuit | Type of terminal | Lug type and Pin type |
| Rated current In | 3, 6, 10, 16, 20, 25, 32, 40, 50, 63A | Terminal capacity | 16mm ² flexible or 25mm ² rigid up to 25A ratings |
| Rated voltage | 1pole 230 AC 50/60Hz, Rated insulation voltage Ui: 500V, Rated impulse withstand voltage Uimp: 6000V, Energy limiting class: 3 | Protection degree | IP20 |
| Ambient temperature | -50C to +40oC pursuant to BS EN / IEC60898 | Installation | Mounting on 35mm DIN rail |
| Characteristic | Thermal operating limit: (1.13-1.45) x In Magnetic operating: B: (3-5) x In C: (5-10) x In D: (10-20) x In | Torque (N.m) | 2 |
| | | Width | 17.5mm per pole |

eRCBO 1P 6kA Compact B and C Curve

6A - 40A:

6kA Type A B & C Curve
SP eRCBO



| Product Prefix: | Current Rating: | Trip curve B or C: |
|------------------------|--------------------------------|---------------------------------|
| CCPBR06 | 06A | - |
| CCPBR06 | 10A | - |
| CCPBR06 | 16A | - |
| CCPBR06 | 20A | - |
| CCPBR06 | 25A | - |
| CCPBR06 | 32A | - |
| CCPBR06 | 40A | - |
| Example: CCPBR06 20A B | Add code: 06A - 50A For rating | Add code: B or C for Curve type |

Technical Data for eRCBO:

| | | | |
|-------------------------------------|---------------------------------|----------------------|------------------------------------------------------|
| Standard | IEC/BS EN61009 | Characteristic | B,C |
| Breaking Capacity | 6kA | Electrical endurance | 10000 |
| Number of poles | 1P+N (1 module - fixed neutral) | Mechanical endurance | 20000 |
| Rated currents | 6, 10, 16, 20, 25, 32, 40A | Ambient temperature | -50C to +40oC, Max. 95%humidity |
| Rated voltage | 230VAC | Connection terminal | Flexible 16mm ² , Rigid 25mm ² |
| Rated Tripping Current | 30mA | Type of terminal | Lug type and Pin type |
| Residual Operating Characteristics | A | Module Width | 17.8mm /module |
| Residual Current Disconnection Time | ≤0.1s | Torque N.m | 2 |

1P+N Bi-Directional 6KA Compact eRCBO Curve B & C

6A - 40A:

6kA Type A B & C Curve
1P+N 1 Mod eRCBO



| Product Prefix: | Current Rating: | Trip curve B or C: | Model: |
|----------------------------------|--------------------------------------|---------------------------------------|--------|
| CPBR06 | 06A | -- | N |
| CPBR06 | 10A | -- | N |
| CPBR06 | 16A | -- | N |
| CPBR06 | 20A | -- | N |
| CPBR06 | 25A | -- | N |
| CPBR06 | 32A | -- | N |
| CPBR06 | 40A | -- | N |
| Example: CPBR0640A B N | | | |
| | Add code: 06A - 40A For rating | Add code: B or C for Curve type | |

*2 Pole eRCBO's available. Please see the three phase product range.

Technical Data for eRCBO:

| | | | |
|-------------------------------------|------------------------------------|----------------------|------------------------------------------------------|
| Standard | BS EN / IEC 61009 | Characteristic | B,C |
| Breaking Capacity | 6kA | Electrical endurance | 10000 |
| Number of poles | 1P+N (1 module - switched neutral) | Mechanical endurance | 20000 |
| Rated currents | 6, 10, 16, 20, 25, 32, 40A | Ambient temperature | -50C to +40oC, Max. 95%humidity |
| Rated voltage | 230VAC | Connection terminal | Flexible 16mm ² , Rigid 25mm ² |
| Rated Tripping Current | 30mA | Type of terminal | Lug type and Pin type |
| Residual Operating Characteristics | A | Module Width | 17.8mm /module |
| Residual Current Disconnection Time | ≤0.1s | Torque N.m | 2 |

AFDD 6kA MCB or RCBO B and C Curve

6A - 40A:

6kA Type A B & C Curve
1 Mod AFDD RCBO and MCB



| Product Prefix: | Function: | kA Rating: | Current Rating: | Trip curve B or C: | Model: |
|-----------------|-----------------------------------------|------------|--------------------------------------|---------------------------------------|--------|
| AFD | - | 06 | 06A | - | -1 |
| AFD | - | 06 | 10A | - | -1 |
| AFD | - | 06 | 16A | - | -1 |
| AFD | - | 06 | 20A | - | -1 |
| AFD | - | 06 | 25A | - | -1 |
| AFD | - | 06 | 32A | - | -1 |
| AFD | - | 06 | 40A | - | -1 |
| | Add code: B for MCB or R for RCBO | | Add code: 06A - 40A For rating | Add code: B or C for Curve type | |

Example: AFD R 06 25A B -1

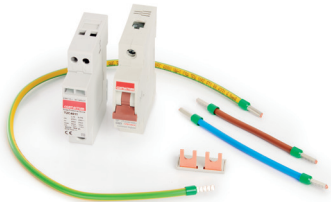
Technical Data for AFDD

| | | | |
|-------------------------------------|------------------------------------|----------------------|------------------------------------------------------|
| Standard | IEC/BS EN 62606, IEC/BS EN 61009-1 | Characteristic | B,C |
| Breaking Capacity | 6kA | Electrical endurance | 4000 |
| Number of poles | 1P+N (1 module) | Mechanical endurance | 20000 |
| Rated currents | 6, 10, 16, 20, 25, 32, 40A | Ambient temperature | -50C to +40oC, Max. 95%humidity |
| Rated voltage | 230VAC | Connection terminal | Flexible 16mm ² , Rigid 25mm ² |
| Rated Tripping Current | 30mA | Type of terminal | Lug type and Pin type |
| Residual Operating Characteristics | A | Module Width | 17.8mm /module |
| Residual Current Disconnection Time | ≤0.1s | Torque N.m | 2 |

Defender Consumer Units

Surge Arrestor

40kA:
Surge 40kA 1+1 Type 2 SPD
Retro Fit Kit



| Product: | Product Code: |
|----------|---------------|
| 40kA | T2C4011KIT |

Contactors



| Product: | Product Code: |
|-----------------------------|---------------|
| 20A 230V 1N/1NC (1 Mod) | COA20-11/230 |
| 20A 230V 2NO (1 Mod) | COA20-20/230 |
| 25A 230V 4NC (2 Mod) | COA25-04/230 |
| 25A 230V 4NO (2 Mods) | COA25-40/230 |
| 40A 230V 2NO (3 Mods) | COA40-20/230 |
| 40A 230V 4NO (3 Mods) | COA40-40/230 |
| 63A 230V 2NO (3 Mods) | COA63-20/230 |
| 63A 230V 4NO (3 Mods) | COA63-40/230 |
| 63A 230V AC/DC 4NO (3 Mods) | COD63-40/230 |

Timers & Bell Transformers



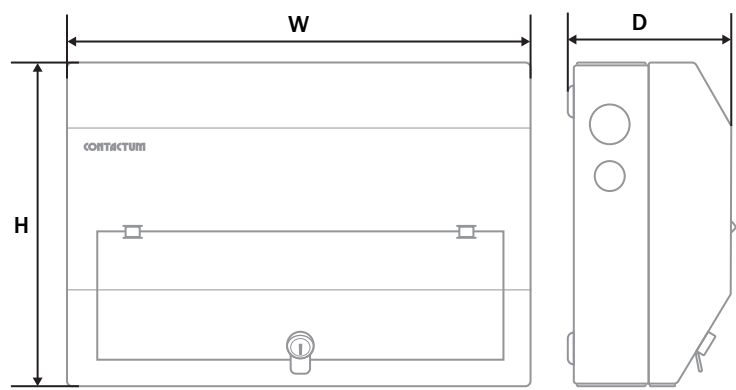
| Product: | Product Code: |
|-------------------------------------|---------------|
| 7Day/24Hr Digital Timer 1 Ch 2 Mod | TSD1T |
| 24HR Analogue Timer 1 Ch 16A Resist | TSDAS1 |
| Bell Transformer 1A 8VA Output | TSBT2 |

Accessories



| Product: | Product Code: |
|--------------------------------------------------------|---------------|
| MCB Blank | CPBBL |
| ¼ Turn Camlock Accessory | DCA01 |
| Key Lock Camlock Accessory | DCA02 |
| Pack of 10 MCB/RCBO Toggle Locking Device (New Design) | DCA10 |
| Pack of 10 AMD3 33mm Membrane Grommet | DCA19 |
| AMD3 Membrane Grommet Kit | DCA20 |
| 40/32mm Tails Red Kit Metal | DCA21 |
| 40/32mm Tails Red Kit Plastic | DCA22 |
| Defender 1.0 C/U Stacking & Link (DDS) Kit | DCA24 |
| Defender 1.0 C/U Stacking & Link (DD) Kit | DCA25 |
| 2.5-50mm2 Earth Cable Connector | DCA26 |
| Defender C/U 14 Mod Spare Busbar and Cover | DCA30 |
| Defender C/U 22 Mod Spare Busbar and Cover | DCA31 |

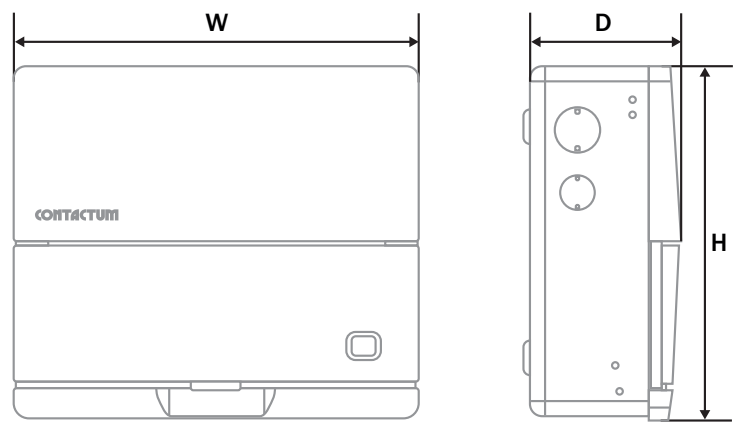
Dimensions



Defender 1.0 Dimensions

Allow 2 modular ways for each Switch Disconnector or RCD and allow 1 modular way for each MCB, RCBO or AFDD

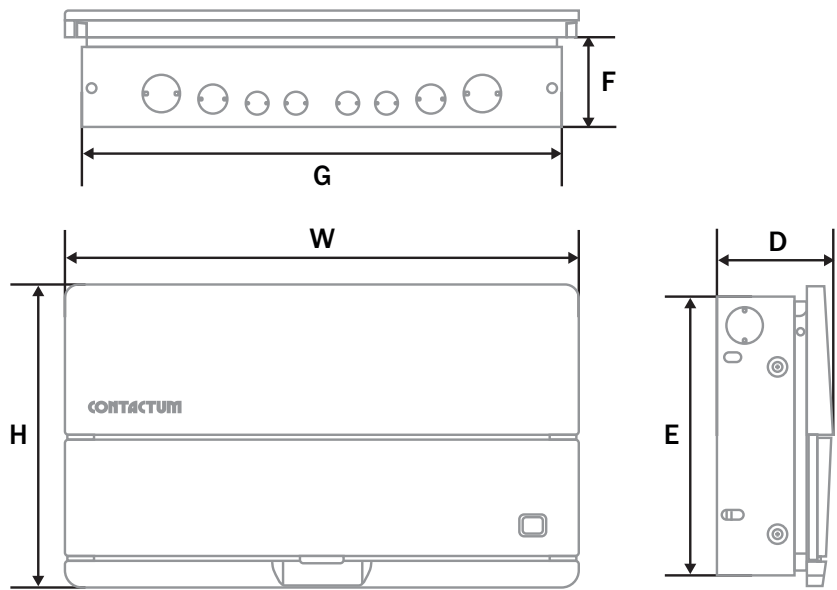
| Dimensions | 2 Mod | 4 Mod | 6 Mod | 8 Mod | 12 Mod | 14 Mod | 16 Mod | 18 Mod | 20 Mod | 22 Mod |
|---------------|-------|-------|-------|-------|--------|--------|--------|--------|--------|--------|
| Height (H) mm | 260 | 260 | 260 | 260 | 260 | 260 | 260 | 260 | 260 | 260 |
| Width (W) mm | 114 | 150 | 186 | 222 | 294 | 330 | 366 | 402 | 438 | 474 |
| Depth (D) mm | 130 | 130 | 130 | 130 | 130 | 130 | 130 | 130 | 130 | 130 |



Surface Mounted Defender 2.0 Dimensions

Allow 2 modular ways for each Switch Disconnector or RCD and allow 1 modular way for each MCB, RCBO or AFDD

| Dimensions | 4 Mod | 6 Mod | 8 Mod | 10 Mod | 12 Mod | 14 Mod | 16 Mod | 16 Mod | 18 Mod | 20 Mod | 22 Mod | 24 Mod | 32 Mod | 44 Mod |
|---------------|-------|-------|-------|--------|--------|--------|--------|--------|--------|--------|--------|--------|--------|--------|
| Height (H) mm | 262 | 262 | 262 | 262 | 262 | 262 | 262 | 524 | 262 | 262 | 262 | 262 | 524 | 524 |
| Width (W) mm | 155 | 227 | 227 | 299 | 299 | 371 | 371 | 227 | 407 | 443 | 479 | 515 | 371 | 479 |
| Depth (D) mm | 114 | 114 | 114 | 114 | 114 | 114 | 114 | 114 | 114 | 114 | 114 | 114 | 114 | 114 |
| Dual Row | | | | | | | | DR | | | | | DR | DR |



Flush Mounted Defender 2.0 Dimensions

Allow 2 modular ways for each Switch Disconnector or RCD and allow 1 modular way for each MCB, RCBO or AFDD

| Dimensions | 8 Mod | 12 Mod | 16 Mod | 16 Mod | 18 Mod | 20 Mod | 32 Mod |
|------------------------|-------|--------|--------|--------|--------|--------|--------|
| Height (H) mm | 262 | 262 | 524 | 262 | 262 | 262 | 524 |
| Width (W) mm | 299 | 371 | 299 | 443 | 479 | 515 | 443 |
| Depth (D) mm | 100 | 100 | 100 | 100 | 100 | 100 | 100 |
| Recessed Height (E) mm | 242 | 242 | 508 | 242 | 242 | 242 | 508 |
| Recessed Width (G) mm | 264 | 336 | 264 | 408 | 444 | 480 | 408 |
| Recessed Depth (F) mm | 77 | 77 | 77 | 77 | 77 | 77 | 77 |
| Dual Row | | | DR | | | | DR |

Technical Data for Consumer Units

| | |
|-------------------------------|----------------------------------------------|
| Standard | BS EN 61439-3:2012 Including Annex ZB (16kA) |
| Max Current Rating (InA) * | 100A |
| Rated Operating Voltage (Ue) | 230V AC 50Hz |
| Short Circuit Withstand (Icw) | 10kA 0.1 sec |
| Poles | 1 |
| Cable Entry/Exit (KO's) | 20, 25 & 32mm |
| Material | 1.2mm Sheet Steel |
| IP Protection Rating | IP2XC/IP4X |
| Impact Rating | IK05 |
| RAL Colour | 9016 |
| Fixing | Surface & Flush (Enclosure type dependant) |
| Terminal Torque (N.m) | 1.5 |
| Module Width | 17.8mm |

Please see product description for individual enclosure InA rating as each Consumer Unit differs. The upstream over current protection device must not exceed the enclosure InA rating.

TEST CERTIFICATE

Issued to: Contactum Limited
Victoria Works,
Edgware Road,
London NW26LF,
United Kingdom

For the product: Low-voltage switchgear and controlgear assembly -
Distribution boards intended to be operated by ordinary persons (DBO)

Trade name: Contactum Defender

Type/Model: DD - CU 1PH 100A 4-20 Way Switch Disconnect Incomer

Ratings: I_{nA} 100 A, U_n 230 V, U_{imp} 4 kV, IP4X, IK05
 I_{sc} 10 kA - 0.1 s (comb busbar), I_{sc} 6 kA at 230 V (incoming units)
 I_{sc} 6 kA and 10 kA at 230 V (outgoing units)
For more details see annex

Manufactured by: Contactum Limited
Victoria Works,
Edgware Road,
London NW26LF,
United Kingdom

Subject: Design verification, Construction and performance

Requirements: IEC 61439-3, 1st ed. 2012-02
Clauses 10.2.3, 10.2.6, 10.2.7, 10.3, 10.4, 10.5, 10.6, 10.7, 10.8, 10.9,
10.10.2.3.5, 10.11, 10.12, 10.13

Remarks: The product complies with the above requirements from the standard.

This Test Certificate is granted on account of an examination by DEKRA, the results of which are laid down in report no. 2217234.14-INC, dated 9 October 2017.

The examination has been carried out on one single specimen of the product, submitted by the manufacturer. The Attestation does not include an assessment of the manufacturer's production. Conformity of his production with the specimen tested by DEKRA is not the responsibility of DEKRA.

Amnhem, 9 October 2017

Number: 2217234.113

DEKRA Certification B.V.

H.L. Schendstok
Certification Manager

© Integral publication of this certificate and adjoining reports is allowed

DEKRA Certification B.V. Meander 1051, 6825 MJ Amnhem P.O. Box 5185, 6802 ED Amnhem, The Netherlands
T +31 88 96 83000 F +31 88 96 83100 www.dekra-certification.com Company registration 09085396

TEST CERTIFICATE

Issued to: Contactum Limited
Victoria Works,
Edgware Road,
London NW26LF,
United Kingdom

For the product: Low-voltage switchgear and controlgear assembly -
Distribution boards intended to be operated by ordinary persons (DBO)

Trade name: Contactum Defender

Type/Model: DS - CU 1PH 100A 8-18 Way Split Load

Ratings: I_{nA} 100 A, U_n 230 V, U_{imp} 4 kV, IP4X, IK05
 I_{sc} 10 kA - 0.1 s (comb busbar), I_{sc} 6 kA at 230 V (incoming units)
 I_{sc} 6 kA and 10 kA at 230 V (outgoing units)
For more details see annex

Manufactured by: Contactum Limited
Victoria Works,
Edgware Road,
London NW26LF,
United Kingdom

Subject: Design verification, Construction and performance

Requirements: IEC 61439-3, 1st ed. 2012-02
Clauses 10.2.3, 10.2.6, 10.2.7, 10.3, 10.4, 10.5, 10.6, 10.7, 10.8, 10.9,
10.10.2.3.5, 10.11, 10.12, 10.13

Remarks: The product complies with the above requirements from the standard.

This Test Certificate is granted on account of an examination by DEKRA, the results of which are laid down in report no. 2217234.12-INC, dated 9 October 2017.

The examination has been carried out on one single specimen of the product, submitted by the manufacturer. The Attestation does not include an assessment of the manufacturer's production. Conformity of his production with the specimen tested by DEKRA is not the responsibility of DEKRA.

Amnhem, 9 October 2017

Number: 2217234.111

DEKRA Certification B.V.

H.L. Schendstok
Certification Manager

© Integral publication of this certificate and adjoining reports is allowed

DEKRA Certification B.V. Meander 1051, 6825 MJ Amnhem P.O. Box 5185, 6802 ED Amnhem, The Netherlands
T +31 88 96 83000 F +31 88 96 83100 www.dekra-certification.com Company registration 09085396

TEST CERTIFICATE

Issued to: Contactum Limited
Victoria Works,
Edgware Road,
London NW26LF,
United Kingdom

For the product: Low-voltage switchgear and controlgear assembly -
Distribution boards intended to be operated by ordinary persons (DBO)

Trade name: Contactum Defender

Type/Model: DDS - CU 1PH 100A 6-16 Way Flexible High Integrity Split Load Dual RCD

Ratings: I_{nA} 100 A, U_n 230 V, U_{imp} 4 kV, IP4X, IK05
 I_{sc} 10 kA - 0.1 s (comb busbar), I_{sc} 6 kA at 230 V (incoming units)
 I_{sc} 6 kA and 10 kA at 230 V (outgoing units)
For more details see annex

Manufactured by: Contactum Limited
Victoria Works,
Edgware Road,
London NW26LF,
United Kingdom

Subject: Design verification, Construction and performance

Requirements: IEC 61439-3, 1st ed. 2012-02
Clauses 10.2.2, 10.2.3, 10.2.6, 10.2.7, 10.3, 10.4, 10.5, 10.6, 10.7, 10.8, 10.9,
10.10.2.3.5, 10.11, 10.12, 10.13

Remarks: The product complies with the above requirements from the standard.

This Test Certificate is granted on account of an examination by DEKRA, the results of which are laid down in report no. 2217234.13-INC, dated 9 October 2017.

The examination has been carried out on one single specimen of the product, submitted by the manufacturer. The Attestation does not include an assessment of the manufacturer's production. Conformity of his production with the specimen tested by DEKRA is not the responsibility of DEKRA.

Amnhem, 9 October 2017

Number: 2217234.112

DEKRA Certification B.V.

H.L. Schendstok
Certification Manager

© Integral publication of this certificate and adjoining reports is allowed

DEKRA Certification B.V. Meander 1051, 6825 MJ Amnhem P.O. Box 5185, 6802 ED Amnhem, The Netherlands
T +31 88 96 83000 F +31 88 96 83100 www.dekra-certification.com Company registration 09085396

TEST CERTIFICATE

Issued to: Contactum Limited
Victoria Works,
Edgware Road,
London NW26LF,
United Kingdom

For the product: Low-voltage switchgear and controlgear assembly -
Distribution boards intended to be operated by ordinary persons (DBO)

Trade name: Contactum Defender

Type/Model: DR - CU 1PH 100A 4-20Way RCD Incomer

Ratings: I_{nA} 80 A, U_n 230 V, U_{imp} 4 kV, IP4X, IK05
 I_{sc} 10 kA - 0.1 s (comb busbar), I_{sc} 6 kA at 230 V (incoming units)
 I_{sc} 6 kA and 10 kA at 230 V (outgoing units)
For more details see annex

Manufactured by: Contactum Limited
Victoria Works,
Edgware Road,
London NW26LF,
United Kingdom

Subject: Design verification, Construction and performance

Requirements: IEC 61439-3, 1st ed. 2012-02
Clauses 10.2.2, 10.2.3, 10.2.6, 10.2.7, 10.3, 10.4, 10.5, 10.6, 10.7, 10.8, 10.9,
10.10.2.3.5, 10.11, 10.12, 10.13

Remarks: The product complies with the above requirements from the standard.

This Test Certificate is granted on account of an examination by DEKRA, the results of which are laid down in report no. 2217234.11-INC, dated 12 February 2018.

The examination has been carried out on one single specimen of the product, submitted by the manufacturer. The Attestation does not include an assessment of the manufacturer's production. Conformity of his production with the specimen tested by DEKRA is not the responsibility of DEKRA.

Amnhem, 9 February 2018


Number: 2217234.110


DEKRA Certification B.V.


H.L. Schendstok
Certification Manager


© Integral publication of this certificate and adjoining reports is allowed

DEKRA Certification B.V. Meander 1051, 6825 MJ Amnhem P.O. Box 5185, 6802 ED Amnhem, The Netherlands
T +31 88 96 83000 F +31 88 96 83100 www.dekra-certification.com Company registration 09085396

| TYPE TEST CERTIFICATE | | tecnalia Inspiring Business | |
|----------------------------------------------------------------------------------------------------------------------------------------------------------------------------------------------------------------------------------------------------------------|--------------------------------------------------------------------------------------------------------------------------------------------------------------------------------------------------------------------------------------------------------------------------------------------------------------------------------------------------------------------------------------------|-----------------------------|--|
| COMPLETE TYPE TESTS | | | |
| No B25-21-AV-01E_FDDSV1-CERT | | | |
| Applicant | Contactum Ltd 2 Blackmoor Lane, Croxley Green Business Park, Watford London WD18 8GA, United Kingdom | | |
| Manufacturer | Alfanar Electrical Systems Madinet alfanar, 3 rd Industrial City P.O. Box 564, Riyadh 11383, Saudi Arabia | | |
| Product | Consumer Units FDDS Defender 2.0 Designation: Contactum Defender 2.0 Main ratings: Rated Current: 80 A Rated Insulation Voltage: 400 V Rated Operation Voltage: 230 V Rated Frequency: 50 Hz Rated Impulse Voltage: 4 kV | | |
| Standard | Fulfills the type-test requirements of: BS EN 61439-3:2012 Edition 1.0 Clauses 10.2.2 - 10.2.3.1 - 10.2.3.2 - 10.2.6 - 10.2.7 - 10.3 - 10.4 - 10.5.2 - 10.5.3 - 10.6 - 10.7 - 10.8 - 10.9.2 - 10.9.3 - 10.10 - 10.11 - Annex ZB 16 kA with Fuse - 10.12 - 10.13 Test results are described in the following documents: Type test report No: B25-21-AV-01E_FDDSV1 | | |
| Certificate issued on | 6 th September 2021 | | |
| Electronic signature | | | |
| Luis Martínez Cancela Head of Electrical Equipment Laboratory | | | |
|  | | | |
| © TECNALIA This certificate, issued by TECNALIA, implies exclusively type test compliance of the product range for which tested objects are representative. Certificate and associated type test report may be issued either in electronic or printed form. | | | |

| TYPE TEST CERTIFICATE | | tecnalia Inspiring Business | |
|----------------------------------------------------------------------------------------------------------------------------------------------------------------------------------------------------------------------------------------------------------------|--------------------------------------------------------------------------------------------------------------------------------------------------------------------------------------------------------------------------------------------------------------------------------------------------------------------------------------------------------------------------------------------|-----------------------------|--|
| COMPLETE TYPE TESTS | | | |
| No B25-21-AV-01E_SDDSV1-CERT | | | |
| Applicant | Contactum Ltd 2 Blackmoor Lane, Croxley Green Business Park, Watford London WD18 8GA, United Kingdom | | |
| Manufacturer | Alfanar Electrical Systems Madinet alfanar, 3 rd Industrial City P.O. Box 564, Riyadh 11383, Saudi Arabia | | |
| Product | Consumer Units SDDS Defender 2.0 Designation: Contactum Defender 2.0 Main ratings: Rated Current: 100 A Rated Insulation Voltage: 400 V Rated Operation Voltage: 230 V Rated Frequency: 50 Hz Rated Impulse Voltage: 4 kV | | |
| Standard | Fulfills the type-test requirements of: BS EN 61439-3:2012 Edition 1.0 Clauses 10.2.2 - 10.2.3.1 - 10.2.3.2 - 10.2.6 - 10.2.7 - 10.3 - 10.4 - 10.5.2 - 10.5.3 - 10.6 - 10.7 - 10.8 - 10.9.2 - 10.9.3 - 10.10 - 10.11 - Annex ZB 16 kA with Fuse - 10.12 - 10.13 Test results are described in the following documents: Type test report No: B25-21-AV-01E_SDDSV1 | | |
| Certificate issued on | 6 th September 2021 | | |
| Electronic signature | | | |
| Luis Martínez Cancela Head of Electrical Equipment Laboratory | | | |
|  | | | |
| © TECNALIA This certificate, issued by TECNALIA, implies exclusively type test compliance of the product range for which tested objects are representative. Certificate and associated type test report may be issued either in electronic or printed form. | | | |

| TYPE TEST CERTIFICATE | | tecnalia Inspiring Business | |
|----------------------------------------------------------------------------------------------------------------------------------------------------------------------------------------------------------------------------------------------------------------|-------------------------------------------------------------------------------------------------------------------------------------------------------------------------------------------------------------------------------------------------------------------------------------------------------------------------------------------------------------------------------------------|-----------------------------|--|
| COMPLETE TYPE TESTS | | | |
| No B25-21-AV-01E_FDDV1-CERT | | | |
| Applicant | Contactum Ltd 2 Blackmoor Lane, Croxley Green Business Park, Watford London WD18 8GA, United Kingdom | | |
| Manufacturer | Alfanar Electrical Systems Madinet alfanar, 3 rd Industrial City P.O. Box 564, Riyadh 11383, Saudi Arabia | | |
| Product | Consumer Units FDD Defender 2.0 Designation: Contactum Defender 2.0 Main ratings: Rated Current: 80 A Rated Insulation Voltage: 400 V Rated Operation Voltage: 230 V Rated Frequency: 50 Hz Rated Impulse Voltage: 4 kV | | |
| Standard | Fulfills the type-test requirements of: BS EN 61439-3:2012 Edition 1.0 Clauses 10.2.2 - 10.2.3.1 - 10.2.3.2 - 10.2.6 - 10.2.7 - 10.3 - 10.4 - 10.5.2 - 10.5.3 - 10.6 - 10.7 - 10.8 - 10.9.2 - 10.9.3 - 10.10 - 10.11 - Annex ZB 16 kA with Fuse - 10.12 - 10.13 Test results are described in the following documents: Type test report No: B25-21-AV-01E_FDDV1 | | |
| Certificate issued on | 6 th September 2021 | | |
| Electronic signature | | | |
| Luis Martínez Cancela Head of Electrical Equipment Laboratory | | | |
|  | | | |
| © TECNALIA This certificate, issued by TECNALIA, implies exclusively type test compliance of the product range for which tested objects are representative. Certificate and associated type test report may be issued either in electronic or printed form. | | | |

| TYPE TEST CERTIFICATE | | tecnalia Inspiring Business | |
|----------------------------------------------------------------------------------------------------------------------------------------------------------------------------------------------------------------------------------------------------------------|-------------------------------------------------------------------------------------------------------------------------------------------------------------------------------------------------------------------------------------------------------------------------------------------------------------------------------------------------------------------------------------------|-----------------------------|--|
| COMPLETE TYPE TESTS | | | |
| No B25-21-AV-01E_SDDV1-CERT | | | |
| Applicant | Contactum Ltd 2 Blackmoor Lane, Croxley Green Business Park, Watford London WD18 8GA, United Kingdom | | |
| Manufacturer | Alfanar Electrical Systems Madinet alfanar, 3 rd Industrial City P.O. Box 564, Riyadh 11383, Saudi Arabia | | |
| Product | Consumer Units SDD Defender 2.0 Designation: Contactum Defender 2.0 Main ratings: Rated Current: 100 A Rated Insulation Voltage: 400 V Rated Operation Voltage: 230 V Rated Frequency: 50 Hz Rated Impulse Voltage: 4 kV | | |
| Standard | Fulfills the type-test requirements of: BS EN 61439-3:2012 Edition 1.0 Clauses 10.2.2 - 10.2.3.1 - 10.2.3.2 - 10.2.6 - 10.2.7 - 10.3 - 10.4 - 10.5.2 - 10.5.3 - 10.6 - 10.7 - 10.8 - 10.9.2 - 10.9.3 - 10.10 - 10.11 - Annex ZB 16 kA with Fuse - 10.12 - 10.13 Test results are described in the following documents: Type test report No: B25-21-AV-01E_SDDV1 | | |
| Certificate issued on | 6 th September 2021 | | |
| Electronic signature | | | |
| Luis Martínez Cancela Head of Electrical Equipment Laboratory | | | |
|  | | | |
| © TECNALIA This certificate, issued by TECNALIA, implies exclusively type test compliance of the product range for which tested objects are representative. Certificate and associated type test report may be issued either in electronic or printed form. | | | |

Defender Consumer Units

CONTACTUM

www.contactum.co.uk

020 8208 7419

sales@contactum.co.uk



@Contactumltd



Contactum Ltd



@Contactumltd



Contactum Ltd



@Contactumltd



Scan me for more
info on our website



DEF2B – RevLev06



5 056199 096602 >