

# CONTACTUM



DEFENDER

## Defender Consumer Units

---

A comprehensive range of single phase consumer units  
Compliant with BS7671 18th Edition Wiring Regulations  
Tested in accordance to BS EN 61439-3

# CONTACTUM

Quality by design

Established in 1936, Contactum is a proud British brand with a distinguished heritage in the electrical industry. For nearly a century, we have been a trusted name in the supply of wiring accessories, circuit protection devices, and control products across residential, commercial, and industrial sectors.

Our reputation has been built on a foundation of quality, safety, and a design-led approach, with a focus on delivering products that meet the unique demands of the UK market.

Offering the latest solution-led wiring accessories to award-winning consumer units and commercial switchgear, Contactum delivers reliable, specification-grade electrical solutions designed to meet the evolving needs of electricians, contractors, wholesalers, and specifiers.

We pride ourselves on combining performance, compliance, and visual appeal across our ranges, supported by robust technical expertise and responsive customer service.



To support our commitment to excellence, Contactum operates an ISO Integrated Management System, covering quality (ISO 9001), environmental (ISO 14001), and occupational health & safety (ISO 45001) standards. This ensures that every aspect of our operations — from product development to customer service — is underpinned by internationally recognised best practices.

This achievement highlights our continuous efforts to operate transparently, reduce environmental impact, and promote responsible business practices throughout our supply chain.

Further reinforcing our dedication to sustainability and corporate responsibility, Contactum has recently been awarded a medal-level rating by Eco Vadis, a leading global assessment platform for environmental, social, and ethical performance.



## alfanar

As part of the alfanar group, Contactum benefits from the backing of a global leader in electrical manufacturing, energy, and infrastructure. Headquartered in Riyadh, Saudi Arabia, alfanar brings world-class scale, engineering excellence, and advanced production capabilities to the partnership.

A large proportion of Contactum's product offering is manufactured at alfanar Industrial City — a cutting-edge 700,000 square metre facility in Riyadh. This ISO-certified complex is equipped with automated production lines, quality testing laboratories, and R&D centres, staffed by skilled professionals committed to delivering consistent quality and innovation across all markets.



By combining the local insight and agility of a UK-based brand with the scale, resources, and innovation of a global manufacturing group, Contactum remains uniquely positioned to serve the needs of the modern electrical market. Whether supporting new build developments, refurbishment projects, or infrastructure upgrades, Contactum continues to deliver dependable solutions trusted by professionals across the UK and beyond.



## Contents

18th Edition	4
Design Service	5
Defender 1.0	6
Defender 1.0 Features	7
Defender 1.0 Consumer Units	8
Defender 2.0	11
Defender 2.0 Features	12
Defender 2.0 Surface Mounted Consumer Units	14
Defender 2.0 Flush Mounted Consumer Units	18
Isolators	20
RCDs	20
MCBs	21
eRCBOs	21
AFDD	22
Surge Arrestor	23
Accessories	23
Dimensions	24
Test Certificates	26

When AMD2 of the 18<sup>th</sup> Edition of the wiring regulations was released in 2022, significant changes were implemented that impacted the decisions made by manufacturers, designers and installers of consumer units and incorporated circuit protection devices.

(421.1.7) Arc Fault Detection

As a means of providing additional protection against fire caused by arc faults in AC final circuits, Arc Fault Detection Devices conforming to IEC/BS EN 62606 are required in certain circumstances and recommended in others. Contactum have introduced a range to support contractors in meeting these obligations.

(443.4) Overvoltage (Surge) Protection

Although not a new addition to the wiring regulations, an emphasis has been put on the merits of installing SPDs and now these devices are becoming a standard inclusion within Consumer Units. Protection against transient overvoltages shall be provided where the consequence caused by the overvoltage could result in serious injury to, or loss of human life and significant financial or data loss.

For all other cases, protection against transient overvoltages shall be provided unless the owner of the installation declares it is not required due to any loss or damage being tolerable and they accept the risk of damage to equipment and any consequential loss.

(531.3.3) RCD Selection

Depending on their behaviour in the presence of DC components and frequencies, an appropriate RCD shall be selected from the different types of RCDs that exist. With the growing number of electronic devices in the home, Type A RCDs are now seen as the general standard and Contactum provide Type A as standard on all RCCBs and RCBOs.

(536.4.3.2) Overload Protection of RCCBs & Switches

Devices of this nature do not normally provide protection against overload. These devices shall now be protected by an appropriately rated overcurrent protective device upstream of the RCCB or switch and be installed according to the manufacturers instructions.

Overload protection of the switch or RCCB can now not be solely based on the use of diversity factors of the downstream circuits. Contactum provides clear InA ratings for every Consumer Unit and advise that this rating must not exceed the upstream OCPD rating.

BS7671:2018 AMD3:2024

An amendment to the wiring regulations (AMD3) was introduced on the 31st July 2024. This amendment provides for the inclusion of two new definitions and one new regulation relating to the use of bidirectional and unidirectional circuit protection devices.

Definitions:

- + **Bidirectional Protective Device**  
A protective device where it is intended by the manufacturer that a source of supply is connected to either or both sets of connection terminals
- + **Unidirectional Protective Device**  
A protective device designed by the manufacturer to allow a power source to be connected only to a specific set of connection terminals.

Regulation 530.3.201

Selection and erection of equipment for protection shall take account of appropriate use of either a unidirectional protective device or a bidirectional device.

Product standards (as listed in appendix 1) for some protective devices, including RCCBs, RCBOs, circuit breakers and AFDDs, require these devices to be marked to indicate if they are unidirectional e.g. “in” and “out” or “Line” and “Load” arrows.



# Contactum Design Service for Circuit Protection

Our bespoke design service for factory-assembled units ensures a customised solution tailored to your project's needs.

## Tailored Circuit Protection Solutions

Our expert team will help you design the optimal configuration for your project.

Using both standard and non-standard Contactum devices and accessories, we supply fully assembled units ready for immediate installation.

If your project requires fully customised solutions or pre-fitted outgoing devices, our service offers:

- + Reduced on-site labour time
- + Seamless project continuity
- + Enhanced efficiency and reliability

## How it Works:

1. Contact our dedicated contractor sales team via the email below.
2. Discuss your requirements, agree on a design configuration, and confirm quantities.  
(Minimum order quantities apply)
3. Receive a tailored quotation based on your exact needs.
4. Place an order through one of our selected distributor partners.
5. We assemble and dispatch your boards—fully configured and ready for installation.

**Contact our  
Customer Service Team:**

Telephone:  
**0208 208 7419**

Email the contractors sales team:  
**[contractors@contactum.co.uk](mailto:contractors@contactum.co.uk)**

## Why Choose Our Design Service?

Our design service is ideal for all project applications, ensuring compliance, continuity, and peace of mind. We collaborate closely with M&E Consultants, Electrical Contractors, and Housing Developers to deliver efficient and seamless solutions.



- + Dedicated contractor sales team
- + Fast turnaround from enquiry to delivery
- + Reduced on-site labour costs
- + Minimised waste from packaging
- + No loose products on-site
- + Correctly configured boards for faster installation
- + Available for all circuit protection ranges

**CONTACTUM**  
Quality by design

## Choosing the Right Solution Without Compromise

At Contactum, we understand that different installations have different demands.

That's why we offer two distinct consumer unit solutions:

### Defender 1.0 and Defender 2.0

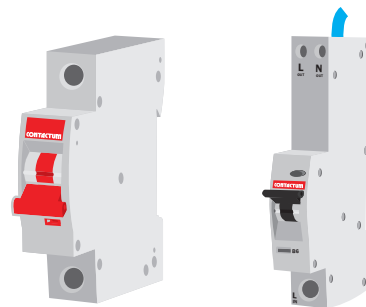
Each designed to meet specific needs while maintaining superior quality, compliance, and safety.

Both designs are supported with a full range 6kA circuit protection devices including:

**MCB's** B or C curve

**RCBO's** Single Pole or Switched Neutral with Bi-Directional power flow compatibility

**AFDD's** MCB or RCBO functionality

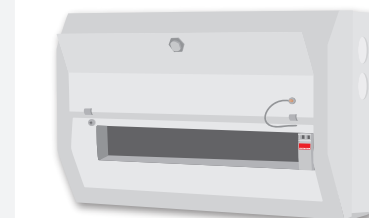


# Defender 1.0 Consumer Unit

## Affordable Reliability Without Compromise

The Defender 1.0 consumer unit is engineered to provide a cost-effective solution while ensuring uncompromised quality, safety, and compliance. Developed to offer exceptional value, it delivers everything needed for a reliable installation without unnecessary extras.

- + **Superior Construction:** Built with high-quality materials for durability and longevity.
- + **Fully Compliant:** Meets BS EN 61439-3 and BS7671 standards for guaranteed safety.
- + **Essential Features:** Designed for straightforward installations with all the fundamental protections required.
- + **Value for Money:** A practical and cost effective choice without sacrificing performance.



### Perfect for:

- + **Standard residential installations**
- + **Cost-conscious projects requiring compliance and quality**
- + **Installers looking for a no-fuss, reliable consumer unit**

## Which One is Right for You?

Whether you need a cost-effective, compliant solution (Defender 1.0) or a premium, feature-rich consumer unit designed for modern living (Defender 2.0), we have the perfect fit for your project. **Turn to page 11 to discover Defender 2.0 in detail.**

Both Defender 1.0 and Defender 2.0 are built to last, protect, and perform—the choice comes down to your project's specific needs.

## Some of the most important aspects are featured here:

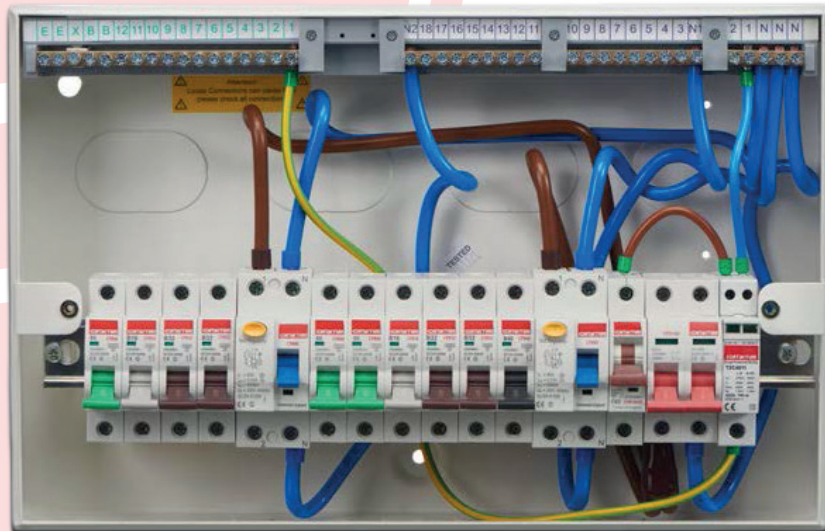
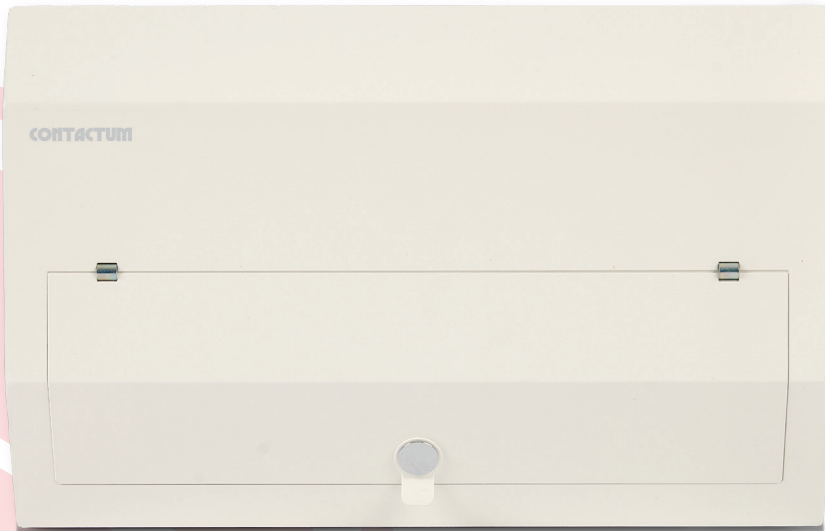
All Defender 1.0 Consumer Units are packed with enhanced features and benefits.

- + Tested by reputed third party in accordance with BS EN 61439-3: 2012 including Annex ZB
- + Up to 100A (InA) rated
- + Type A RCDs and RCBOs as standard
- + Stackable enclosures



# Features

I



## External Features



Secure hinge design



Locking kits available

### + Stackable enclosure

Allowing unlimited configurations

### + Comprehensive range

Comprising 10 different enclosures sizes

### + Modern sleek design

Suitable for all installations

### + Degree of protection IP4X

## Internal Features

### + Maximum cable space

Extensive number of cable entry points allowing easy installation

### + Flexible Board Configuration

To enable optimal combination of RCD, MCB and RCBO use

### + Up to 22 module board as standard

Combine boards to increase number of outgoing ways

### + Pre-populated Configurations Available

### + Full metal din rail

For secure device fixing

Defender 1.0

I

Switch Disconnect Incomer Consumer Units  
Without & With Surge Protection

2 Way:  
63A CU ISO Incomer

4 - 20 Way:  
100A CU ISO Incomer



Stand Alone SPD Enclosure

Product Code:  
DD006SPMS

Size:  
0 Way

63A Rating

Product Code:  
DD026MS

Size:  
2 Way

100A Rating		
Size:	Without SPD	With SPD
	Product Code:	Product Code:
4 Way	DD041MS	DD041SPMS
6 Way	DD061MS	
8 Way		DD081SPMS
10 Way	DD101MS	DD101SPMS
12 Way	DD121MS	DD121SPMS
14 Way	DD141MS	DD141SPMS
16 Way	DD161MS	DD161SPMS
18 Way	DD181MS	DD181SPMS
20 Way	DD201MS	
Populated		
10 Way Switch + 6 eRCBO + 4 Blanks		DD101SPMS-P01

RCD Incomer Consumer Units

4 - 20 Way:  
80A CU ISO Incomer  
+ 1 RCD Type A



80A Rating

Product Code:

DR048AMS

DR068AMS

DR108AMS

DR148AMS

DR168AMS

DR208AMS

Size:  
4 Way  
6 Way  
10 Way  
14 Way  
16 Way  
20 Way



Split Load Consumer Units

8 - 18 Way:  
80A CU ISO Incomer  
+ 1 RCD Type A



Size:

- 8 Way
- 10 Way
- 12 Way
- 14 Way
- 18 Way

80A Rating

Product Code:

- DS0818AMS
- DS1018AMS
- DS1218AMS
- DS1418AMS
- DS1818AMS

Flexible High Integrity Split Load Dual RCD  
Consumer Units Without & With Surge Protection

6 - 16 Way:  
80A CU ISO Incomer  
+ 2 RCD Type A



Size:

- 6 Way
- 8 Way
- 10 Way
- 12 Way
- 14 Way
- 16 Way

80A Rating

	Without SPD	With SPD
Product Code:		
6 Way	DDS06188AMS	DDS06188ASPMS
8 Way	DDS08188AMS	DDS08188ASPMS
10 Way	DDS10188AMS	DDS10188ASPMS
12 Way	DDS12188AMS	DDS12188ASPMS
14 Way	DDS14188AMS	DDS14188ASPMS
16 Way	DDS16188AMS	
Populated		
6 Way c/w + 6 MCBs	DDS06188AMS-P01	
8 Way c/w + 8 MCBs	DDS08188AMS-P01	
10 Way c/w + 10 MCBs	DDS10188AMS-P01	DDS10188ASPMS-P01
12 Way c/w + 10 MCBs	DDS12188AMS-P01	DDS12188ASPMS-P01
14 Way c/w + 10 MCBs	DDS14188AMS-P01	DDS14188ASPMS-P01
16 Way c/w + 10 MCBs	DDS16188AMS-P01	

Other populated configurations available on request



## Empty Enclosures

### 4 - 22 Mod:

IP4X Mod Metal Encl  
c/w Earth/ Neutral



### Size:

### Product Code:

2 Mod	DME02MS
4 Mod	DME04MS
6 Mod	DME06MS
8 Mod	DME08MS
12 Mod	DME012MS
14 Mod	DME014MS
16 Mod	DME016MS
18 Mod	DME018MS
20 Mod	DME020MS
22 Mod	DME022MS

## Garage Unit & Shower Enclosures

### 2 Way:

63A CU RCD  
Type A Incomer

### Garage Unit:

63A RCD Type A + 16A MCB  
+ 6A MCB



### Size:

### Product Code:

2 Way 63A	DR026AMS
-----------	----------

### Populated

Garage Unit 63A	DR026AMS-P01
Shower Enc 0 Way 40A	DSPE1AMS
Shower Enc 1 Way 50A	DSPE2AMS
Shower Enc 2 Way 63A	DSPE3AMS

Other populated configurations available on request

### Shower Enclosures:

0 O/G Way 40A RCBO Type A

1 O/G Way 63A RCD Type A  
+ 50A MCB

2 O/G Way 63A RCD Type A  
+ 32A MCB + 16A MCB



## Rear Cable Top Entry Bracket

### 12 - 22 Mod:

Rear Cable  
Top Entry Bracket



### Size:

### Product Code:

12 Mod	RCEB-TE-12MOD
14 Mod	RCEB-TE-14MOD
16 Mod	RCEB-TE-16MOD
18 Mod	RCEB-TE-18MOD
20 Mod	RCEB-TE-20MOD
22 Mod	RCEB-TE-22MOD

## Technical Data for Defender 1.0:

Standard	BS EN 61439-3: 2012 Including Annex ZB (16kA)
Max Current Rating (InA) *	100A
Rated Operating Voltage (Ue)	230V AC 50Hz
Short Circuit Withstand (Icw)	10kA 0.1 sec
Poles	1
Cable Entry/Exit (K0's)	20, 25 & 32mm
Material	1.2mm Sheet Steel
IP Protection Rating	IP2XC/IP4X

Impact Rating	IK05
RAL Colour	9016
Fixing	Surface
Terminal Torque (N.m)	1.5
Module Width	17.8mm

Please see product description for individual enclosure InA rating as each Consumer Unit differs. The upstream over current protection device must not exceed the enclosure InA rating.

## Choosing the Right Solution Without Compromise

At Contactum, we understand that different installations have different demands.

That's why we offer two distinct consumer unit solutions:

### Defender 1.0 and Defender 2.0

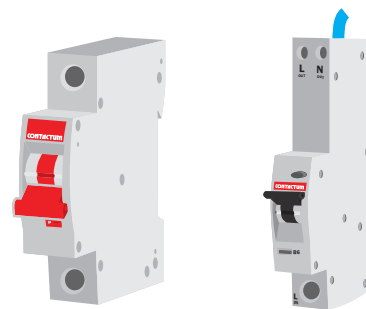
Each designed to meet specific needs while maintaining superior quality, compliance, and safety.

Both designs are supported with a full range 6kA circuit protection devices including:

**MCB's** B or C curve

**RCBO's** Single Pole or Switched Neutral with Bi-Directional power flow compatibility

**AFDD's** MCB or RCBO functionality

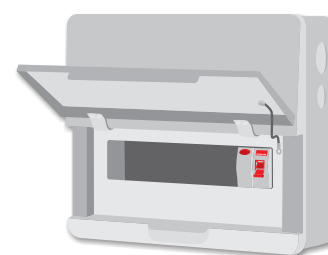


# Defender 2.0 Consumer Unit

## Designed for Modern Living & Effortless Installation

Building upon the robust foundation of the Defender 1.0, the Defender 2.0 consumer unit introduces an enhanced experience tailored for both the installer and end user. Thoughtfully designed with modern aesthetics, convenience, and innovation in mind, Defender 2.0 is the premium choice for contemporary electrical installations

- + **Installer-Friendly Features:** Time-saving innovations make installation smoother and faster.
- + **Enhanced Safety & Compliance:** Fully meets BS EN 61439-3 and BS7671 while offering additional safety features.
- + **Aesthetically Pleasing:** A sleek, modern design that blends seamlessly into modern living environments in both surface and flush mounted options.
- + **Expanded Range & Configurations:** Available in surface and flush mounted options, with single or dual-row configurations to accommodate different installation requirements.



### Perfect for:

- + High-end multi-residential installations requiring superior technical performance
- + Installers seeking premium ease-of-installation features
- + Designers and homeowners who value both safety and stylish design

## Which One is Right for You?

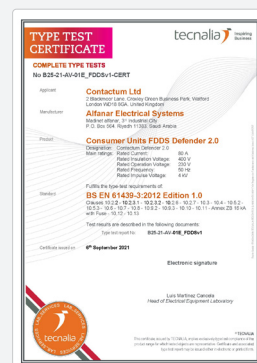
Whether you need a cost-effective, compliant solution (Defender 1.0) or a premium, feature-rich consumer unit designed for modern living (Defender 2.0), we have the perfect fit for your project.

Both Defender 1.0 and Defender 2.0 are built to last, protect, and perform - the choice comes down to your project's specific needs.

## Some of the most important aspects are featured here:

All Defender 2.0 Consumer Units are packed with enhanced features and benefits.

- + Tested by reputed third party in accordance with BS EN 61439-3: 2012 including Annex ZB
- + Up to 100A (InA) rated
- + Type A RCDs and RCBOs as standard
- + Surface and Flush Mounted versions available
- + Up to 24 modules Single Row
- + Up to 44 modules Dual Row



# NEW Generation

II



## External Features

### + UV Powder coated paint

Colour finish RAL9016 seamlessly blending into today's modern residential installations

### + Extensive number of cable entry points

Allowing easy installation

### + Modern curved design with flush front lid

For the most demanding and visible installations blending in with today's modern living environments where the Consumer Unit is on show

### + Designed by Micieli



**Locking kits available**



### Retained screws

Fitted on the enclosure lid for ease of fixing and convenience, no more lost cover screws



### Unique hinged lid design

Lid can be latched open for convenience during installation tests and circuit identification



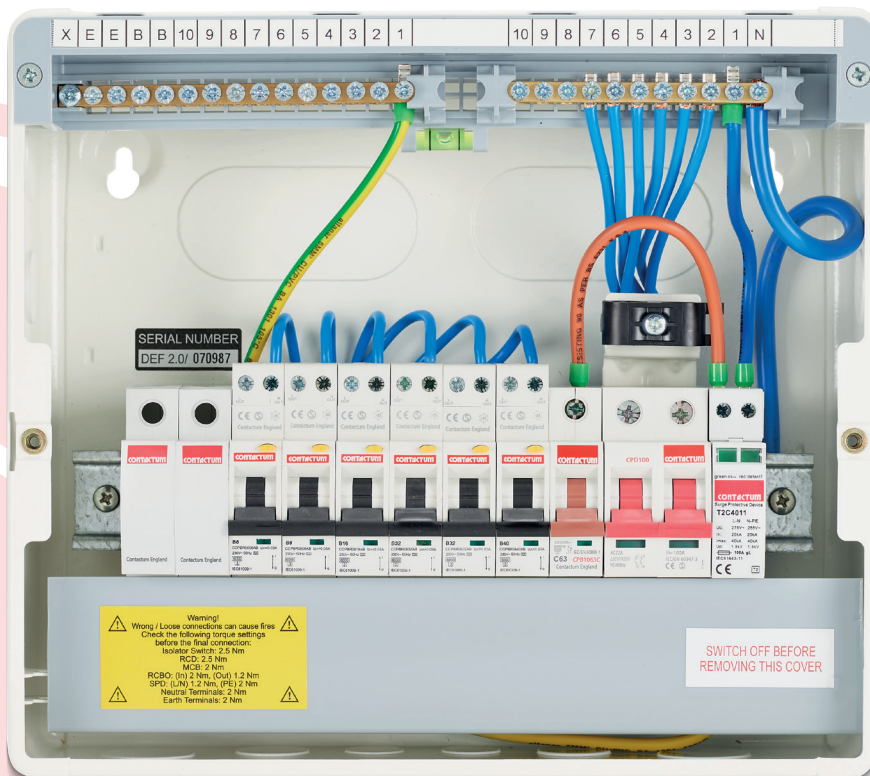
### Finger operated mechanical lid clip

Safety feature. Needs to be pressed to be opened



# NEW Generation

II



## Internal Features



### Spirit level

High quality spirit level. For added installation guidance (Surface Mounted version only)



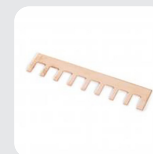
### Cable clamp

Meter Tails Retention Clamp Standard on all Defender 2.0 Consumer Units



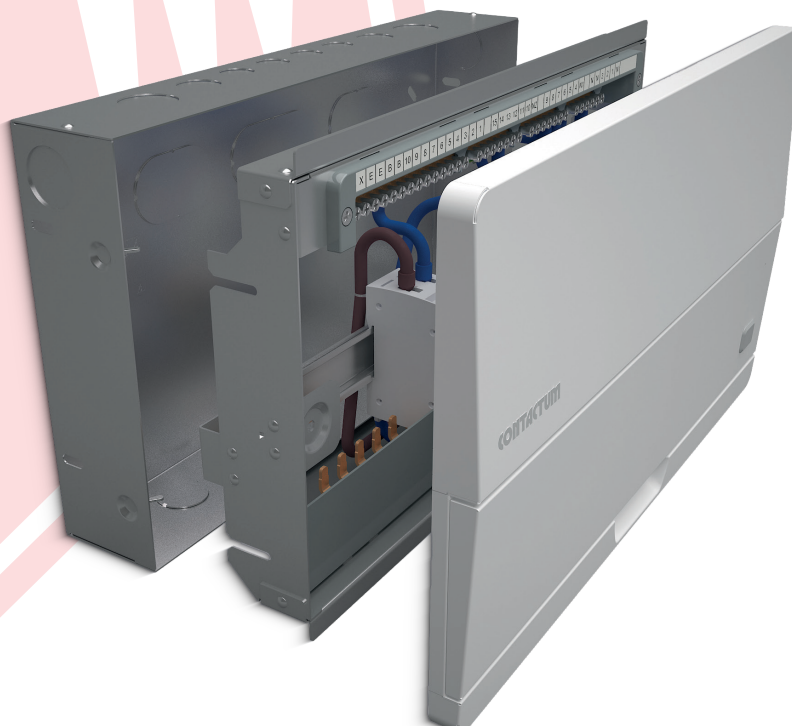
### Surge protection device

Available in kit form or pre-fitted



### Busbar cover

Snappable copper floating busbar with easy secure clip-in busbar cover – For faster installation and maximum flexibility



## Flush Features

### + Full metal din rail

For secure device fixing

### + Flush front lid

Only protrudes 23mm when installed

### + Adjustable assembly frame

Allowing for different plasterboard depths

### + 2 Part flush design

Allowing for 1<sup>st</sup> fix and 2<sup>nd</sup> fix Installation

## Switch Disconnect Incomer Consumer Units

**2 - 10 Way:**  
63A  
CU ISO Incomer

**14 - 42 Way:**  
100A Dual Row  
CU ISO Incomer



**4 - 22 Way:**  
100A  
CU ISO Incomer

**Size:**

2 Way  
6 Way  
10 Way

**Populated**

10 Way  
+ 6 eRCBO + 4 Blank

**63A Rating**

**Product Code:**

SDD026MS  
SDD066MS  
SDD106MS

**80A Rating**

**Size:**

2 Way

**Product Code:**

SDD028MS

**100A Rating**

**Size:**

4 Way  
6 Way  
8 Way  
10 Way  
12 Way  
14 Way  
16 Way  
18 Way  
20 Way  
22 Way

**Dual Row**

6 + 8 Way (Total 14 way)  
14 + 16 Way (Total 30 way)  
20 + 22 Way (Total 42 way)

**Populated**

10 Way  
+ 6 eRCBO + 4 Blank

	Without SPD	With SPD
<b>Product Code:</b>	<b>Product Code:</b>	<b>Product Code:</b>
4 Way	SDD041MS	SDD041SPMS
6 Way	SDD061MS	SDD061SPMS
8 Way	SDD081MS	SDD081SPMS
10 Way	SDD101MS	SDD101SPMS
12 Way	SDD121MS	SDD121SPMS
14 Way	SDD141MS	SDD141SPMS
16 Way	SDD161MS	SDD161SPMS
18 Way	SDD181MS	SDD181SPMS
20 Way	SDD201MS	SDD201SPMS
22 Way	SDD221MS	
6 + 8 Way (Total 14 way)	SDD2141MS	
14 + 16 Way (Total 30 way)	SDD301MS	
20 + 22 Way (Total 42 way)	SDD421MS	
10 Way + 6 eRCBO + 4 Blank	SDD101MS-P01	

RCD Incomer Consumer Units

- 6 - 10 Way:**  
63A CU RCD  
Type A Incomer
- 6 Way:**  
80A CU RCD  
Type A Incomer
- 10 - 20 Way:**  
100A CU RCD  
Type A Incomer



Size:

- 6 Way
- 10 Way

63A Rating

Product Code:

- SDR066AMS
- SDR106AMS

Size:

- 6 Way

80A Rating

Product Code:

- SDR068AMS

Size:

- 10 Way
- 14 Way
- 16 Way
- 20 Way

100A Rating

Product Code:

- SDR101AMS
- SDR141AMS
- SDR161AMS
- SDR201AMS

Garage Unit

- 2 Way:**  
63A CU RCD  
Type A Incomer
- Garage Unit:**  
63A RCD Type A + 16A MCB  
+ 6A MCB



Size:

- 2 Way

Populated

- Garage Unit

63A Rating

Product Code:

- SDR026AMS
- SDR026AMS-P01

Other populated configurations available on request

Split Load Consumer Units

- 8 - 16 Way:**  
63A CU ISO Incomer  
+ 1 RCD Type A
- 8 - 20 Way:**  
100A CU ISO Incomer  
+ 1 RCD Type A



Size:

- 8 Way
- 12 Way
- 14 Way
- 16 Way

63A Rating

Product Code:

- SDS0816AMS
- SDS1216AMS
- SDS1416AMS
- SDS1616AMS

Size:

- 8 Way
- 12 Way
- 14 Way
- 16 Way
- 18 Way
- 20 Way

100A Rating

Product Code:

- SDS0811AMS
- SDS1211AMS
- SDS1411AMS
- SDS1611AMS
- SDS1811AMS
- SDS2011AMS

Flexible High Integrity Split Load Dual RCD Consumer Units

- 6 - 16 Way:**  
63A CU ISO Incomer  
+ 2 RCD Type A
- 6 - 18 Way:**  
100A CU ISO Incomer  
+ 2 RCD Type A

- 26 - 38 Way:**  
100A Dual Row CU ISO Incomer  
+ 2 RCD Type A



Size:

6 Way	SDDS06166AMS	
8 Way		SDDS08166ASPMS
10 Way	SDDS10166AMS	SDDS10166ASPMS
12 Way	SDDS12166AMS	SDDS12166ASPMS
14 Way	SDDS14166AMS	SDDS14166ASPMS
16 Way	SDDS16166AMS	

Populated

6 Way + 6MCB	SDDS06166AMS-P01
10 Way + 10MCB	SDDS10166AMS-P01
12 Way + 10MCB	SDDS12166AMS-P01

Other populated configurations available on request

63A Rating

Without SPD	With SPD
Product Code:	Product Code:
SDDS06166AMS	
	SDDS08166ASPMS
SDDS10166AMS	SDDS10166ASPMS
SDDS12166AMS	SDDS12166ASPMS
SDDS14166AMS	SDDS14166ASPMS

100A Rating

Size:

6 Way	SDDS06111AMS	
8 Way		SDDS08111ASPMS
10 Way	SDDS10111AMS	SDDS10111ASPMS
12 Way	SDDS12111AMS	SDDS12111ASPMS
14 Way	SDDS14111AMS	SDDS14111ASPMS
16 Way	SDDS16111AMS	SDDS16111ASPMS
18 Way	SDDS18111AMS	

Dual Row

12 + 14 Way (Total 26 way) + 2 RCD Type A	SDDS26111AMS
18 + 20 Way (Total 38 way) + 2 RCD Type A	SDDS38111AMS

Populated

6 Way + 6 MCB	SDDS06111AMS-P01	
10 Way + 10 MCB	SDDS10111AMS-P01	SDDS10111ASPMS-P01
12 Way + 10 MCB	SDDS12111AMS-P01	SDDS12111ASPMS-P01
14 Way + 10 MCB	SDDS14111AMS-P01	SDDS14111ASPMS-P01
16 Way + 10 MCB	SDDS16111AMS-P01	SDDS16111ASPMS-P01
18 Way + 10 MCB	SDDS18111AMS-P01	



Empty Enclosures

**4 - 24 Mod:**  
IP2XC/IP4X Mod Metal Encl  
c/w Earth/ Neutral



Size:	Product Code:
4 Mod	SDME04MS
6 Mod	SDME06MS
8 Mod	SDME08MS
10 Mod	SDME10MS
12 Mod	SDME12MS
14 Mod	SDME14MS
16 Mod	SDME16MS
18 Mod	SDME18MS
20 Mod	SDME20MS
22 Mod	SDME22MS
24 Mod	SDME24MS

Rear Cable Top Entry Bracket

**12 - 24 Mod:**  
Rear Cable  
Top Entry Bracket



Size:	Product Code:
12 Mod	RCEB-TE-12M-D2
16 Mod	RCEB-TE-16M-D2
18 Mod	RCEB-TE-18M-D2
20 Mod	RCEB-TE-20M-D2
22 Mod	RCEB-TE-22M-D2
24 Mod	RCEB-TE-24M-D2

Technical Data for Surface CU:

Standard	BS EN 61439-3: 2012 Including Annex ZB (16kA)	Impact Rating	IK05
Max Current Rating (InA) *	100A	RAL Colour	9016
Rated Operating Voltage (Ue)	230V AC 50Hz	Fixing	Surface
Short Circuit Withstand (Icw)	10kA 0.1 sec	Terminal Torque (N.m)	1.5
Poles	1	Module Width	17.8mm
Cable Entry/Exit (K0's)	20, 25 & 32mm	Please see product description for individual enclosure InA rating as each Consumer Unit differs. The upstream over current protection device must not exceed the enclosure InA rating.	
Material	1.2mm Sheet Steel		
IP Protection Rating	IP2XC/IP4X		

## Switch Disconnect Incomer Consumer Units

- 6 - 8 Way:**  
80A Flush Mounted  
CU ISO Incomer
- 8 - 18 Way:**  
100A Flush Mounted  
CU ISO Incomer
- 14 - 30 Way:**  
100A Flush Mounted Dual Row  
CU ISO Incomer



Size:

- 6 Way
- 8 Way

80A Rating

Product Code:

- FDD068MS
- FDD088MS

Size:

- 8 Way
- 10 Way
- 12 Way
- 14 Way
- 16 Way
- 18 Way

100A Rating

Without SPD

Product Code:

- FDD101MS
- FDD141MS
- FDD161MS
- FDD181MS

With SPD

Product Code:

- FDD081SPMS
- FDD121SPMS
- FDD141SPMS
- FDD161SPMS

Dual Row

Size:

- 6 + 8 Way (Total 14 way)
- 14 + 16 Way (Total 30 way)

Product Code:

- FDD2141MS
- FDD301MS

## RCD Incomer Consumer Units

- 6 Way:**  
80A Flush Mounted  
CU RCD Type A Incomer
- 10 - 18 Way:**  
100A Flush Mounted  
CU RCD Type A Incomer



Size:

- 6 Way

80A Rating

Product Code:

- FDR068AMS

Size:

- 10 Way
- 14 Way
- 16 Way
- 18 Way

100A Rating

Product Code:

- FDR101AMS
- FDR141AMS
- FDR161AMS
- FDR181AMS

Flexible High Integrity Split Load Dual RCD Consumer Units

6 - 12 Way:  
63A CU ISO Incomer  
+ 2 RCD Type A



Size:

- 6 Way
- 10 Way
- 12 Way

63A Rating	
Without SPD	With SPD
Product Code:	Product Code:
FDDS06166AMS	
FDDS10166AMS	FDDS10166ASPMS
FDDS12166AMS	

Other populated configurations available on request

6 - 14 Way:  
80A CU ISO Incomer  
+ 2 RCD Type A



Size:

- 6 Way
- 10 Way
- 12 Way
- 14 Way

80A Rating	
Without SPD	With SPD
Product Code:	Product Code:
FDDS06188AMS	
FDDS10188AMS	FDDS10188ASPMS
FDDS12188AMS	
FDDS14188AMS	

Technical Data for Flush CU:

Standard	BS EN 61439-3: 2012 Including Annex ZB (16kA)	Impact Rating	IK05
Max Current Rating (InA) *	100A	RAL Colour	9016
Rated Operating Voltage (Ue)	230V AC 50Hz	Fixing	Flush
Short Circuit Withstand (Icw)	10kA 0.1 sec	Terminal Torque (N.m)	1.5
Poles	1	Module Width	17.8mm
Cable Entry/Exit (K0's)	20, 25 & 32mm	Please see product description for individual enclosure InA rating as each Consumer Unit differs. The upstream over current protection device must not exceed the enclosure InA rating.	
Material	1.2mm Sheet Steel		
IP Protection Rating	IP2XC/IP4X		

Isolators



Product:

63A Double Pole Isolator

Product Code:

CPD63

Product:

100A Double Pole Isolator

Product Code:

CPD100

63A Rating

100A Rating

Technical Data for Isolator:

Standard	EN / IEC60947-3	Mechanical endurance	10000
Rated currents	63, 100A	Type of terminal	Lug type and Pin type
Rated voltage	2 pole 230 AC 50/60Hz	Terminal capacity	Cables up to 50mm <sup>2</sup>
Utilization category	AC-22A	Ambient temperature (oC)	-5oC to +40oC, Max.95% humidity
Icw	12Ie, t=0.1s	Storage temperature (oC)	-40~+75
Rated short-circuit making capacity Icn	20Ie, t=0.1s	Altitude (meters)	Max. 2,000
Rated making & breaking capacity	3Ie, 1.05Ie, COS =0.65	Protection degree	IP20
Rated insulation voltage Ui	690V	Installation	Mounting on 35mm DIN rail
Rated impulse withstand voltage Uimp	4000V	Module Width	17.8mm per pole
Electrical endurance	1500		

RCDs

**30mA:**  
63A Type A  
2 Pole RCD

**30mA and 100mA:**  
100A Type A  
2 Pole RCD



Rating:

30mA

Product Code:

CPR63A

Rating:

30mA

100mA

100mA + Time Delay

Product Code:

CPR100A

CPR1010A

CPR1010AT

63A Rating

100A Rating

Technical Data for RCD:

Standard	Confirming to EN / IEC61008-1	Ambient temperature	-5oC to +40oC, Max. 95%humidity
Rated conditional short-circuit current, Inc	6kA	Residual current disconnection time	≤0.1s
Protection	Residual current	Rated residual current making & breaking	500A for In=25,40A
Type	A	Capacity, IΔm	630A for In=63,80,100
Rated current, In	63, 100	Type of trip	Electro-magnetic release
Number of poles	2(1+N)	Type of terminal	Lug type and Pin type
Rated sensitivity currents, I Δn	30,100mA	Terminal capacity	Cables up to 35mm <sup>2</sup>
Rated residual non-operating current	0.5 X I Δn	Protection degree	IP20
Rated impulse withstand voltage Uimp	6000V	Installation	35mm DIN rail
Rated voltages 2pole	230VAC		



### MCB 1P 6kA B and C Curve

#### 3A - 63A:

1P 6kA B, C & D  
Curve MCB



Product Prefix:	Current Rating:	Trip Curve B or C:
CPB06	03	-
CPB06	06	-
CPB06	10	-
CPB06	16	-
CPB06	20	-
CPB06	25	-
CPB06	32	-
CPB06	40	-
CPB06	50	-
CPB06	63	-
<b>Example:</b> CPB06 06 B	<b>Add code:</b> 03 - 63 <b>For rating</b>	<b>Add code:</b> B or C for <b>Curve type</b>

#### Technical Data for MCB:

Standard	Confirming to IEC/BS EN60898-1	Number of poles	1P
Breaking capacity	6kA	Type of trip	Thermal / magnetic release
Protection	Against overload and short circuit	Type of terminal	Lug type and Pin type
Rated current In	3, 6, 10, 16, 20, 25, 32, 40, 50, 63A	Terminal capacity	16mm <sup>2</sup> flexible or 25mm <sup>2</sup> rigid up to 25A ratings
Rated voltage	1pole 230 AC 50/60Hz, Rated insulation voltage Ui: 500V, Rated impulse withstand voltage Uimp: 6000V, Energy limiting class: 3	Protection degree	IP20
Ambient temperature	-50C to +40oC pursuant to BS EN / IEC60898	Installation	Mounting on 35mm DIN rail
Characteristic	Thermal operating limit: (1.13-1.45) x In Magnetic operating: B: (3-5) x In C: (5-10) x In D: (10-20) x In	Torque (N.m)	2
		Width	17.5mm per pole

### eRCBO 1P 6kA Compact B and C Curve

#### 6A - 40A:

6kA Type A B & C Curve  
SP eRCBO



Product Prefix:	Current Rating:	Trip curve B or C:
CCPBR06	06A	-
CCPBR06	10A	-
CCPBR06	16A	-
CCPBR06	20A	-
CCPBR06	25A	-
CCPBR06	32A	-
CCPBR06	40A	-
<b>Example:</b> CCPBR06 20A B	<b>Add code:</b> 06A - 50A <b>For rating</b>	<b>Add code:</b> B or C for <b>Curve type</b>

#### Technical Data for eRCBO:

Standard	IEC/BS EN61009	Characteristic	B,C
Breaking Capacity	6kA	Electrical endurance	10000
Number of poles	1P+N (1 module - fixed neutral)	Mechanical endurance	20000
Rated currents	6, 10, 16, 20, 25, 32, 40A	Ambient temperature	-50C to +40oC, Max. 95%humidity
Rated voltage	230VAC	Connection terminal	Flexible 16mm <sup>2</sup> , Rigid 25mm <sup>2</sup>
Rated Tripping Current	30mA	Type of terminal	Lug type and Pin type
Residual Operating Characteristics	A	Module Width	17.8mm /module
Residual Current Disconnection Time	≤0.1s	Torque N.m	2

### 1P+N Bi-Directional 6KA Compact eRCBO Curve B & C

#### 6A - 40A:

6kA Type A B & C Curve  
1P+N 1 Mod eRCBO



Product Prefix:	Current Rating:	Trip curve B or C:	Model:
CPBR06	06A	--	N
CPBR06	10A	--	N
CPBR06	16A	--	N
CPBR06	20A	--	N
CPBR06	25A	--	N
CPBR06	32A	--	N
CPBR06	40A	--	N
<b>Example:</b> CPBR0640A B N			
	Add code: 06A - 40A For rating	Add code: B or C for Curve type	

\*2 Pole eRCBO's available. Please see the three phase product range.

#### Technical Data for eRCBO:

Standard	BS EN / IEC 61009	Characteristic	B,C
Breaking Capacity	6kA	Electrical endurance	10000
Number of poles	1P+N (1 module – switched neutral)	Mechanical endurance	20000
Rated currents	6, 10, 16, 20, 25, 32, 40A	Ambient temperature	-5oC to +40oC, Max. 95%humidity
Rated voltage	230VAC	Connection terminal	Flexible 16mm <sup>2</sup> , Rigid 25mm <sup>2</sup>
Rated Tripping Current	30mA	Type of terminal	Lug type and Pin type
Residual Operating Characteristics	A	Module Width	17.8mm /module
Residual Current Disconnection Time	≤0.1s	Torque N.m	2

### AFDD 6kA MCB or RCBO B and C Curve

#### 6A - 40A:

6kA Type A B & C Curve  
1 Mod AFDD RCBO and MCB



Product Prefix:	Function:	kA Rating:	Current Rating:	Trip curve B or C:	Model:
AFD	-	06	06A	-	-1
AFD	-	06	10A	-	-1
AFD	-	06	16A	-	-1
AFD	-	06	20A	-	-1
AFD	-	06	25A	-	-1
AFD	-	06	32A	-	-1
AFD	-	06	40A	-	-1
	Add code: B for MCB or R for RCBO		Add code: 06A - 40A For rating	Add code: B or C for Curve type	

Example: AFD R 06 25A B -1

#### Technical Data for AFDD

Standard	IEC/BS EN 62606, IEC/BS EN 61009-1	Characteristic	B,C
Breaking Capacity	6kA	Electrical endurance	4000
Number of poles	1P+N (1 module)	Mechanical endurance	20000
Rated currents	6, 10, 16, 20, 25, 32, 40A	Ambient temperature	-5oC to +40oC, Max. 95%humidity
Rated voltage	230VAC	Connection terminal	Flexible 16mm <sup>2</sup> , Rigid 25mm <sup>2</sup>
Rated Tripping Current	30mA	Type of terminal	Lug type and Pin type
Residual Operating Characteristics	A	Module Width	17.8mm /module
Residual Current Disconnection Time	≤0.1s	Torque N.m	2

# Defender Consumer Units

## Surge Arrestor

**40kA:**  
Surge 40kA 1+1 Type 2 SPD  
Retro Fit Kit



Product:	Product Code:
40kA	T2C4011KIT

## Contactors



Product:	Product Code:
20A 230V 1N/1NC (1 Mod)	COA20-11/230
20A 230V 2NO (1 Mod)	COA20-20/230
25A 230V 4NC (2 Mod)	COA25-04/230
25A 230V 4NO (2 Mods)	COA25-40/230
40A 230V 2NO (3 Mods)	COA40-20/230
40A 230V 4NO (3 Mods)	COA40-40/230
63A 230V 2NO (3 Mods)	COA63-20/230
63A 230V 4NO (3 Mods)	COA63-40/230
63A 230V AC/DC 4NO (3 Mods)	COD63-40/230

## Timers & Bell Transformers



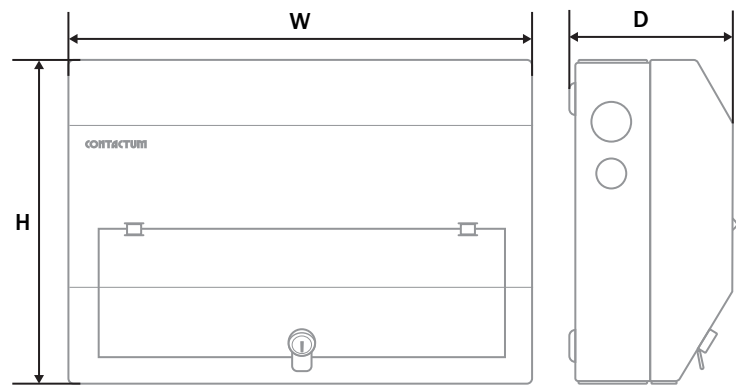
Product:	Product Code:
7Day/24Hr Digital Timer 1 Ch 2 Mod	TSD1T
24HR Analogue Timer 1 Ch 16A Resist	TSDAS1
Bell Transformer 1A 8VA Output	TSBT2

## Accessories



Product:	Product Code:
MCB Blank	CPBBL
¼ Turn Camlock Accessory	DCA01
Key Lock Camlock Accessory	DCA02
Pack of 10 MCB/RCBO Toggle Locking Device (New Design)	DCA10
Pack of 10 AMD3 33mm Membrane Grommet	DCA19
AMD3 Membrane Grommet Kit	DCA20
40/32mm Tails Red Kit Metal	DCA21
40/32mm Tails Red Kit Plastic	DCA22
Defender 1.0 C/U Stacking & Link (DDS) Kit	DCA24
Defender 1.0 C/U Stacking & Link (DD) Kit	DCA25
2.5-50mm2 Earth Cable Connector	DCA26
Defender C/U 14 Mod Spare Busbar and Cover	DCA30
Defender C/U 22 Mod Spare Busbar and Cover	DCA31

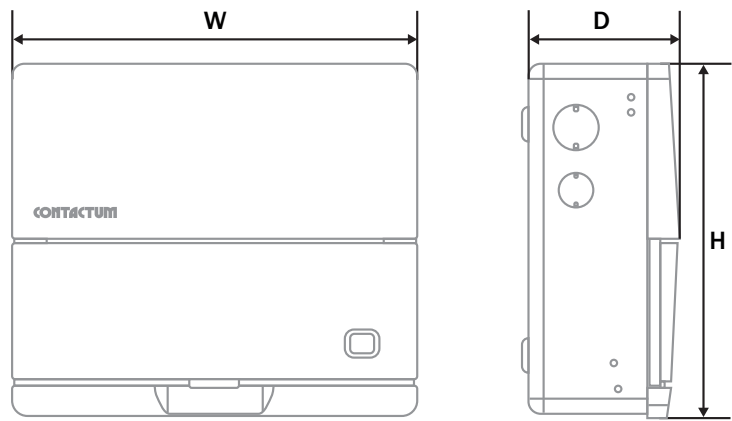
# Dimensions



## Defender 1.0 Dimensions

Allow 2 modular ways for each Switch Disconnector or RCD and allow 1 modular way for each MCB, RCBO or AFDD

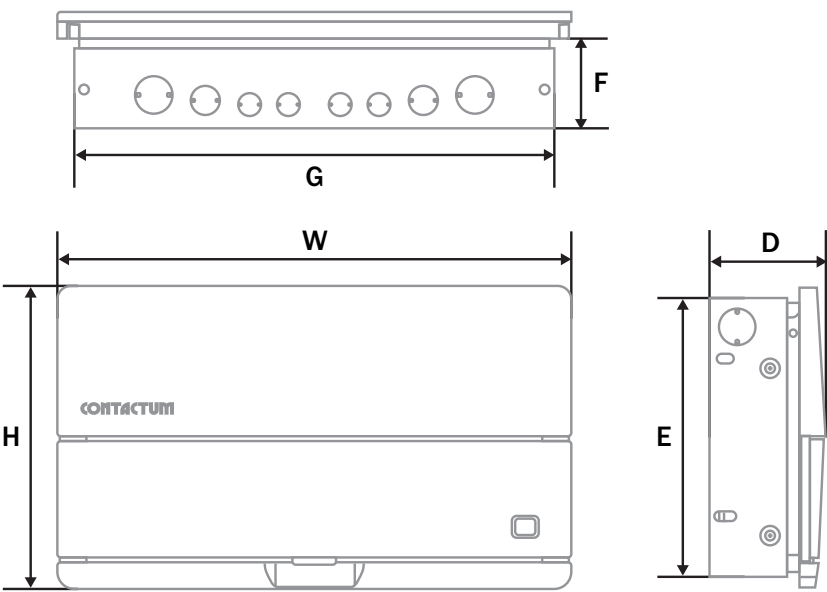
Dimensions	2 Mod	4 Mod	6 Mod	8 Mod	12 Mod	14 Mod	16 Mod	18 Mod	20 Mod	22 Mod
Height (H) mm	260	260	260	260	260	260	260	260	260	260
Width (W) mm	114	150	186	222	294	330	366	402	438	474
Depth (D) mm	130	130	130	130	130	130	130	130	130	130



## Surface Mounted Defender 2.0 Dimensions

Allow 2 modular ways for each Switch Disconnector or RCD and allow 1 modular way for each MCB, RCBO or AFDD

Dimensions	4 Mod	6 Mod	8 Mod	10 Mod	12 Mod	14 Mod	16 Mod	16 Mod	18 Mod	20 Mod	22 Mod	24 Mod	32 Mod	44 Mod
Height (H) mm	262	262	262	262	262	262	262	524	262	262	262	262	524	524
Width (W) mm	155	227	227	299	299	371	371	227	407	443	479	515	371	479
Depth (D) mm	114	114	114	114	114	114	114	114	114	114	114	114	114	114
Dual Row								DR					DR	DR



Flush Mounted Defender 2.0 Dimensions

Allow 2 modular ways for each Switch Disconnector or RCD and allow 1 modular way for each MCB, RCBO or AFDD

Dimensions	8 Mod	12 Mod	16 Mod	16 Mod	18 Mod	20 Mod	32 Mod
Height (H) mm	262	262	524	262	262	262	524
Width (W) mm	299	371	299	443	479	515	443
Depth (D) mm	100	100	100	100	100	100	100
Recessed Height (E) mm	242	242	508	242	242	242	508
Recessed Width (G) mm	264	336	264	408	444	480	408
Recessed Depth (F) mm	77	77	77	77	77	77	77
Dual Row			DR				DR

Technical Data for Consumer Units

Standard	BS EN 61439-3:2012 Including Annex ZB (16kA)
Max Current Rating (InA) *	100A
Rated Operating Voltage (Ue)	230V AC 50Hz
Short Circuit Withstand (Icw)	10kA 0.1 sec
Poles	1
Cable Entry/Exit (K0's)	20, 25 & 32mm
Material	1.2mm Sheet Steel
IP Protection Rating	IP2XC/IP4X
Impact Rating	IK05
RAL Colour	9016
Fixing	Surface & Flush (Enclosure type dependant)
Terminal Torque (N.m)	1.5
Module Width	17.8mm

Please see product description for individual enclosure InA rating as each Consumer Unit differs. The upstream over current protection device must not exceed the enclosure InA rating.



TEST CERTIFICATE

Issued to: Contactum Limited  
Victoria Works,  
Edgware Road,  
London NW26LF,  
United Kingdom

For the product: Low-voltage switchgear and controlgear assembly -  
Distribution boards intended to be operated by ordinary persons (DBO)

Trade name: Contactum Defender

Type/Model: DD - CU 1PH 100A 4-20 Way Switch Disconnect Incomer

Ratings: I<sub>ka</sub> 100 A, U<sub>i</sub> 230 V, U<sub>i</sub> 400 V, U<sub>imp</sub> 4 kV, IP4X, IK05  
I<sub>nw</sub> 10 kA - 0,1 s (comb busbar), I<sub>sc</sub> 6 kA at 230 V (incoming units)  
I<sub>sc</sub> 6 kA and 10 kA at 230 V (outgoing units)  
For more details see annex

Manufactured by: Contactum Limited  
Victoria Works,  
Edgware Road,  
London NW26LF,  
United Kingdom

Subject: Design verification; Construction and performance

Requirements: IEC 61439-3, 1st ed. 2012-02  
Clauses 10.2.3, 10.2.6, 10.2.7, 10.3, 10.4, 10.5, 10.6, 10.7, 10.8, 10.9,  
10.10.2.3.5, 10.11, 10.12, 10.13

Remarks: The product complies with the above requirements from the standard.

This Test Certificate is granted on account of an examination by DEKRA, the results of which are laid down in report no. 2217234.14-INC, dated 9 October 2017.

The examination has been carried out on one single specimen of the product, submitted by the manufacturer. The Attestation does not include an assessment of the manufacturer's production. Conformity of his production with the specimen tested by DEKRA is not the responsibility of DEKRA.

Amnhem, 9 October 2017                      Number: 2217234.113

DEKRA Certification B.V.



H.L. Schendstok  
Certification Manager

© Integral publication of this certificate and adjoining reports is allowed

DEKRA Certification B.V., Meander 1051, 6825 MJ Amnhem P.O. Box 5185, 6802 ED Amnhem, The Netherlands  
T +31 88 96 83000 F +31 88 96 83100 www.dekra-certification.com Company registration 09085396

TEST CERTIFICATE

Issued to: Contactum Limited  
Victoria Works,  
Edgware Road,  
London NW26LF,  
United Kingdom

For the product: Low-voltage switchgear and controlgear assembly -  
Distribution boards intended to be operated by ordinary persons (DBO)

Trade name: Contactum Defender

Type/Model: DS - CU 1PH 100A 8-18 Way Split Load

Ratings: I<sub>ka</sub> 100 A, U<sub>i</sub> 230 V, U<sub>i</sub> 400 V, U<sub>imp</sub> 4 kV, IP4X, IK05  
I<sub>nw</sub> 10 kA - 0,1 s (comb busbar), I<sub>sc</sub> 6 kA at 230 V (incoming units)  
I<sub>sc</sub> 6 kA and 10 kA at 230 V (outgoing units)  
For more details see annex

Manufactured by: Contactum Limited  
Victoria Works,  
Edgware Road,  
London NW26LF,  
United Kingdom

Subject: Design verification; Construction and performance

Requirements: IEC 61439-3, 1st ed. 2012-02  
Clauses 10.2.3, 10.2.6, 10.2.7, 10.3, 10.4, 10.5, 10.6, 10.7, 10.8, 10.9,  
10.10.2.3.5, 10.11, 10.12, 10.13


Remarks: The product complies with the above requirements from the standard.

This Test Certificate is granted on account of an examination by DEKRA, the results of which are laid down in report no. 2217234.12-INC, dated 9 October 2017.

The examination has been carried out on one single specimen of the product, submitted by the manufacturer. The Attestation does not include an assessment of the manufacturer's production. Conformity of his production with the specimen tested by DEKRA is not the responsibility of DEKRA.

Amnhem, 9 October 2017                      Number: 2217234.111

DEKRA Certification B.V.



H.L. Schendstok  
Certification Manager

© Integral publication of this certificate and adjoining reports is allowed

DEKRA Certification B.V., Meander 1051, 6825 MJ Amnhem P.O. Box 5185, 6802 ED Amnhem, The Netherlands  
T +31 88 96 83000 F +31 88 96 83100 www.dekra-certification.com Company registration 09085396

TEST CERTIFICATE

Issued to: Contactum Limited  
Victoria Works,  
Edgware Road,  
London NW26LF,  
United Kingdom

For the product: Low-voltage switchgear and controlgear assembly -  
Distribution boards intended to be operated by ordinary persons (DBO)

Trade name: Contactum Defender

Type/Model: DDS - CU 1PH 100A 6-16 Way Flexible High Integrity Split Load Dual RCD

Ratings: I<sub>ka</sub> 100 A, U<sub>i</sub> 230 V, U<sub>i</sub> 400 V, U<sub>imp</sub> 4 kV, IP4X, IK05  
I<sub>nw</sub> 10 kA - 0,1 s (comb busbar), I<sub>sc</sub> 6 kA at 230 V (incoming units)  
I<sub>sc</sub> 6 kA and 10 kA at 230 V (outgoing units)  
For more details see annex

Manufactured by: Contactum Limited  
Victoria Works,  
Edgware Road,  
London NW26LF,  
United Kingdom

Subject: Design verification; Construction and performance

Requirements: IEC 61439-3, 1st ed. 2012-02  
Clauses 10.2.3, 10.2.6, 10.2.7, 10.3, 10.4, 10.5, 10.6, 10.7, 10.8, 10.9,  
10.10.2.3.5, 10.11, 10.12, 10.13

Remarks: The product complies with the above requirements from the standard.

This Test Certificate is granted on account of an examination by DEKRA, the results of which are laid down in report no. 2217234.13-INC, dated 9 October 2017.

The examination has been carried out on one single specimen of the product, submitted by the manufacturer. The Attestation does not include an assessment of the manufacturer's production. Conformity of his production with the specimen tested by DEKRA is not the responsibility of DEKRA.

Amnhem, 9 October 2017                      Number: 2217234.112

DEKRA Certification B.V.



H.L. Schendstok  
Certification Manager

© Integral publication of this certificate and adjoining reports is allowed

DEKRA Certification B.V., Meander 1051, 6825 MJ Amnhem P.O. Box 5185, 6802 ED Amnhem, The Netherlands  
T +31 88 96 83000 F +31 88 96 83100 www.dekra-certification.com Company registration 09085396

TEST CERTIFICATE

Issued to: Contactum Limited  
Victoria Works,  
Edgware Road,  
London NW26LF,  
United Kingdom

For the product: Low-voltage switchgear and controlgear assembly -  
Distribution boards intended to be operated by ordinary persons (DBO)

Trade name: Contactum Defender

Type/Model: DR - CU 1PH 100A 4-20Way RCD Incomer

Ratings: I<sub>ka</sub> 80 A, U<sub>i</sub> 230 V, U<sub>i</sub> 400 V, U<sub>imp</sub> 4 kV, IP4X, IK05  
I<sub>nw</sub> 10 kA - 0,1 s (comb busbar), I<sub>sc</sub> 6 kA at 230 V (incoming units)  
I<sub>sc</sub> 6 kA and 10 kA at 230 V (outgoing units)  
For more details see annex

Manufactured by: Contactum Limited  
Victoria Works,  
Edgware Road,  
London NW26LF,  
United Kingdom

Subject: Design verification; Construction and performance

Requirements: IEC 61439-3, 1st ed. 2012-02  
Clauses 10.2.2, 10.2.3, 10.2.6, 10.2.7, 10.3, 10.4, 10.5, 10.6, 10.7, 10.8, 10.9,  
10.10.2.3.5, 10.11, 10.12, 10.13

Remarks: The product complies with the above requirements from the standard.

This Test Certificate is granted on account of an examination by DEKRA, the results of which are laid down in report no. 2217234.11-INC, dated 12 February 2018.

The examination has been carried out on one single specimen of the product, submitted by the manufacturer. The Attestation does not include an assessment of the manufacturer's production. Conformity of his production with the specimen tested by DEKRA is not the responsibility of DEKRA.

Amnhem, 9 February 2018                      Number: 2217234.110

DEKRA Certification B.V.





H.L. Schendstok  
Certification Manager


© Integral publication of this certificate and adjoining reports is allowed

DEKRA Certification B.V., Meander 1051, 6825 MJ Amnhem P.O. Box 5185, 6802 ED Amnhem, The Netherlands  
T +31 88 96 83000 F +31 88 96 83100 www.dekra-certification.com Company registration 09085396

TYPE TEST CERTIFICATE		tecnalia Inspiring Business	
<b>COMPLETE TYPE TESTS</b>			
<b>No B25-21-AV-01E_FDDSV1-CERT</b>			
Applicant	<b>Contactum Ltd</b> 2 Blackmoor Lane, Croyley Green Business Park, Watford London WD18 8GA, United Kingdom		
Manufacturer	<b>Alfanar Electrical Systems</b> Madinet alfanar, 3 <sup>rd</sup> Industrial City P.O. Box 564, Riyadh 11383, Saudi Arabia		
Product	<b>Consumer Units FDDS Defender 2.0</b> Designation: Contactum Defender 2.0 Main ratings: Rated Current: 80 A Rated Insulation Voltage: 400 V Rated Operation Voltage: 230 V Rated Frequency: 50 Hz Rated Impulse Voltage: 4 kV		
Standard	Fulfills the type-test requirements of: <b>BS EN 61439-3:2012 Edition 1.0</b> Clauses 10.2.2 - 10.2.3.1 - 10.2.3.2 - 10.2.6 - 10.2.7 - 10.3 - 10.4 - 10.5.2 - 10.5.3 - 10.6 - 10.7 - 10.8 - 10.9.2 - 10.9.3 - 10.10 - 10.11 - Annex ZB 16 kA with Fuse - 10.12 - 10.13 Test results are described in the following documents: Type test report No: <b>B25-21-AV-01E_FDDSV1</b>		
Certificate issued on	<b>6<sup>th</sup> September 2021</b>		
Electronic signature			
Luis Martínez Cancela Head of Electrical Equipment Laboratory			
			
<small>© TECNALIA</small> This certificate, issued by TECNALIA, implies exclusively type test compliance of the product range for which tested objects are representative. Certificate and associated type test report may be issued either in electronic or printed form.			

TYPE TEST CERTIFICATE		tecnalia Inspiring Business	
<b>COMPLETE TYPE TESTS</b>			
<b>No B25-21-AV-01E_SDDSV1-CERT</b>			
Applicant	<b>Contactum Ltd</b> 2 Blackmoor Lane, Croyley Green Business Park, Watford London WD18 8GA, United Kingdom		
Manufacturer	<b>Alfanar Electrical Systems</b> Madinet alfanar, 3 <sup>rd</sup> Industrial City P.O. Box 564, Riyadh 11383, Saudi Arabia		
Product	<b>Consumer Units SDDS Defender 2.0</b> Designation: Contactum Defender 2.0 Main ratings: Rated Current: 100 A Rated Insulation Voltage: 400 V Rated Operation Voltage: 230 V Rated Frequency: 50 Hz Rated Impulse Voltage: 4 kV		
Standard	Fulfills the type-test requirements of: <b>BS EN 61439-3:2012 Edition 1.0</b> Clauses 10.2.2 - 10.2.3.1 - 10.2.3.2 - 10.2.6 - 10.2.7 - 10.3 - 10.4 - 10.5.2 - 10.5.3 - 10.6 - 10.7 - 10.8 - 10.9.2 - 10.9.3 - 10.10 - 10.11 - Annex ZB 16 kA with Fuse - 10.12 - 10.13 Test results are described in the following documents: Type test report No: <b>B25-21-AV-01E_SDDSV1</b>		
Certificate issued on	<b>6<sup>th</sup> September 2021</b>		
Electronic signature			
Luis Martínez Cancela Head of Electrical Equipment Laboratory			
			
<small>© TECNALIA</small> This certificate, issued by TECNALIA, implies exclusively type test compliance of the product range for which tested objects are representative. Certificate and associated type test report may be issued either in electronic or printed form.			

TYPE TEST CERTIFICATE		tecnalia Inspiring Business	
<b>COMPLETE TYPE TESTS</b>			
<b>No B25-21-AV-01E_FDDV1-CERT</b>			
Applicant	<b>Contactum Ltd</b> 2 Blackmoor Lane, Croyley Green Business Park, Watford London WD18 8GA, United Kingdom		
Manufacturer	<b>Alfanar Electrical Systems</b> Madinet alfanar, 3 <sup>rd</sup> Industrial City P.O. Box 564, Riyadh 11383, Saudi Arabia		
Product	<b>Consumer Units FDD Defender 2.0</b> Designation: Contactum Defender 2.0 Main ratings: Rated Current: 80 A Rated Insulation Voltage: 400 V Rated Operation Voltage: 230 V Rated Frequency: 50 Hz Rated Impulse Voltage: 4 kV		
Standard	Fulfills the type-test requirements of: <b>BS EN 61439-3:2012 Edition 1.0</b> Clauses 10.2.2 - 10.2.3.1 - 10.2.3.2 - 10.2.6 - 10.2.7 - 10.3 - 10.4 - 10.5.2 - 10.5.3 - 10.6 - 10.7 - 10.8 - 10.9.2 - 10.9.3 - 10.10 - 10.11 - Annex ZB 16 kA with Fuse - 10.12 - 10.13 Test results are described in the following documents: Type test report No: <b>B25-21-AV-01E_FDDV1</b>		
Certificate issued on	<b>6<sup>th</sup> September 2021</b>		
Electronic signature			
Luis Martínez Cancela Head of Electrical Equipment Laboratory			
			
<small>© TECNALIA</small> This certificate, issued by TECNALIA, implies exclusively type test compliance of the product range for which tested objects are representative. Certificate and associated type test report may be issued either in electronic or printed form.			

TYPE TEST CERTIFICATE		tecnalia Inspiring Business	
<b>COMPLETE TYPE TESTS</b>			
<b>No B25-21-AV-01E_SDDV1-CERT</b>			
Applicant	<b>Contactum Ltd</b> 2 Blackmoor Lane, Croyley Green Business Park, Watford London WD18 8GA, United Kingdom		
Manufacturer	<b>Alfanar Electrical Systems</b> Madinet alfanar, 3 <sup>rd</sup> Industrial City P.O. Box 564, Riyadh 11383, Saudi Arabia		
Product	<b>Consumer Units SDD Defender 2.0</b> Designation: Contactum Defender 2.0 Main ratings: Rated Current: 100 A Rated Insulation Voltage: 400 V Rated Operation Voltage: 230 V Rated Frequency: 50 Hz Rated Impulse Voltage: 4 kV		
Standard	Fulfills the type-test requirements of: <b>BS EN 61439-3:2012 Edition 1.0</b> Clauses 10.2.2 - 10.2.3.1 - 10.2.3.2 - 10.2.6 - 10.2.7 - 10.3 - 10.4 - 10.5.2 - 10.5.3 - 10.6 - 10.7 - 10.8 - 10.9.2 - 10.9.3 - 10.10 - 10.11 - Annex ZB 16 kA with Fuse - 10.12 - 10.13 Test results are described in the following documents: Type test report No: <b>B25-21-AV-01E_SDDV1</b>		
Certificate issued on	<b>6<sup>th</sup> September 2021</b>		
Electronic signature			
Luis Martínez Cancela Head of Electrical Equipment Laboratory			
			
<small>© TECNALIA</small> This certificate, issued by TECNALIA, implies exclusively type test compliance of the product range for which tested objects are representative. Certificate and associated type test report may be issued either in electronic or printed form.			



# DEFENDER



## CONTACTUM

[www.contactum.co.uk](http://www.contactum.co.uk)

020 8208 7419

[sales@contactum.co.uk](mailto:sales@contactum.co.uk)



@Contactumltd



Contactum Ltd



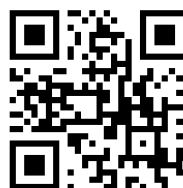
@Contactumltd



Contactum Ltd



@Contactumltd



Scan me for more  
info on our website



DEF2B - RevLev05



5 056199 096602 >